

# REMUS MoTo 2017



Made in Austria - Since 1990

CUSTOM BIKES  
SCOOTER  
STREETBIKES

  
**REMUS**  
SPORTEXHAUST

# REMUS INNOVATION

## Kompetenz bei Motorradabgasanlagen / competence in motorbike sport exhaust systems

Seit über 25 Jahren entwickelt und fertigt REMUS qualitativ hochwertige Sportauspuffanlagen für Motorräder.

Darüber hinaus beliefert das Unternehmen namhafte Motorradhersteller als Erstausrüster mit Komponenten und kompletten Abgasanlagen.

Das hochmoderne REMUS Forschungs- und Entwicklungszentrum bietet weitreichende Möglichkeiten zur Entwicklung von Abgasanlagen. Neben der mechanischen und thermischen Auslegung sowie Optimierung steht natürlich die Entwicklung des typisch sonoren REMUS Sounds im Mittelpunkt.

Die Kombination aus hochwertigen Werkstoffen, modernsten Bearbeitungs- und Verfahrenstechnologien sowie hochqualifizierten Mitarbeitern garantieren Produkte der Spitzenklasse mit höchster Form- und Passgenauigkeit.

Since more than 25 years, high quality sport exhaust systems for motorbikes are produced and manufactured at REMUS.

Furthermore, REMUS produces OE components and complete OE exhaust systems for well known vehicle manufactures.

The REMUS Research and Development center offers extensive possibilities in the development of exhaust systems. Beside the mechanical and thermal design and optimization, the creation of the well known sonorous REMUS sound is one of the most important development targets.

The combination of high quality raw materials, modern machining and special process technologies together with highly qualified employees results in first class products of perfect shape and fitting accuracy.

*STAY TUNED!  
YOUR REMUS TEAM*







**CUSTOM BIKES**



Custom Exhausts	4 - 9
Lieferprogramm / product range	10 - 17
BUELL Motorcycles	18
Victory Motorcycles	19

**SCOOTER**



Scooter Sportschalldämpfer / Scooter Sportexhausts	20 - 22
Bremshebel / brake levers	23
Lieferprogramm / product range	24 - 26

**STREETBIKES**



REMUS Sportschalldämpfer / REMUS Sportexhausts	27 - 31
Lieferprogramm / product range	32 - 49

REMUS Racing	50 - 51
--------------	---------



# CUSTOM BIKES



IT'S TIME  
TO RIDE





# CUSTOM EXHAUST SLIP-ON (OPTIMIERT / OPTIMIZED)

mit wechselbaren Endkappen / with changeable end caps (mit EG Genehmigung / with EC homologation)

**NEW  
PRODUCT**



- Verbessertes Klangbild durch Terzanalyse / Improved sound by third octave analysis
- Noch satterer Sound bei tiefen Frequenzen / Deeper sound at low frequencies
- Katalysator in der Einlasseinheit / Catalytic converter place in inlet unit
- Einlasseinheit mit Hitzeschutzabdeckung / Inlet unit equipped with heat shield
- Passend für / Available for Harley-Davidson® Sportster, Dyna und Softail

**Wählen Sie aus 6  
unterschiedlichen  
Designs /  
Choose between 6  
different end caps**



EK80 / EK10 - SLASH CUT



EK81 / EK11 - STRAIGHT END



EK82 / EK12 - TAPERED

- Zylindrische Form / Cylindrical geometry
- Durchmesser / Diameter: Ø 84 mm
- Mantellänge 420 mm / Sleeve length 420 mm
- Mantelmaterial: Edelstahl / Sleeve material: Stainless steel
- Oberflächenbehandlung: Silberchrome oder schwarz beschichtet / Surface treatment: chrome plated or black coated
- Gewicht / Weight: 2,65 kg





# CUSTOM EXHAUST

mit wechselbaren Endkappen / with changeable end caps (mit EG Genehmigung / with EC homologation)



Wählen Sie aus 9  
unterschiedlichen Designs /  
Choose between 9 different end caps



EK76 - SNIPER



EK72 / EK02 - PERFORATED



EK73 / EK03 - TAPERED



EK71 / EK01 - SLASH CUT



EK75 / EK05 - ROLLED UP

- Zylindrische Form / Cylindrical geometry
- Durchmesser / Diameter:  $\varnothing$  84 mm
- Mantellänge ~ 405 mm / Sleeve length ~ 405 mm
- Mantelmaterial: Edelstahl / Sleeve material: Stainless steel
- Oberflächenbehandlung: Silberchrome oder schwarz beschichtet / Surface treatment: chrome plated or black coated
- Gewicht / Weight: 2,65 kg



# CUSTOM EXHAUST Touring Ø 102 mm (4inch)

mit wechselbaren Endkappen / with changeable end caps (mit EG Genehmigung / with EC homologation)



- Zylindrische Form / Cylindrical shape
- Durchmesser / Diameter: Ø102 mm
- Mantellänge ~ 670 mm / Sleeve length ~ 670 mm
- Mantelmaterialien: Edelstahl / Sleeve materials: Stainless steel
- Oberflächenbehandlung: Chrom / Surface treatment: Chrome
- Gewicht / Weight: 3,6kg





# **CUSTOM EXHAUST** Komplettanlagen / **Complete systems**

(mit EG Genehmigung / with EC homologation)



Komplettanlage 2-1 mit konischem Schalldämpfer / Complete system 2-1 with conical exhaust



Komplettanlage 2-1 mit PowerCone Schalldämpfer / Complete system 2-1 with PowerCone exhaust



# REMUS SC15 - ELECTRONIC SOUND CONTROL

für Sportster, Dyna, Softail und Touring / for Sportster, Dyna, Softail and Touring

Die von REMUS entwickelte Electronic Sound Control – kurz SC15 – genannt ist ein CAN-Bus gesteuertes Klappensystem, mit einer im Endschalldämpfer sitzenden Klappe. Das Steuergerät verarbeitet die CAN-Bus Signale und gibt sie über den Aktuator an die Auspuffklappe weiter. Dadurch ergibt sich in Abhängigkeit sämtlicher Motorparameter und Fahrzustände eine exakte Ansteuerung der Klappe zur Optimierung des Sounds unter Berücksichtigung sämtlicher gesetzlichen Richtlinien.

Zusätzlich besteht über einen am Lenker montierten Taster die Möglichkeit, aktiv in das Soundmanagement einzugreifen. Die komplexe Elektronik stellt aber in jedem Fall sicher, dass in Abhängigkeit von Drehzahl, Geschwindigkeit und gewähltem Gang die Geräuschwerte entsprechend der EG Genehmigung eingehalten werden.

The latest electronic sound control system from REMUS, called SC15, is a CAN-bus controlled valve system, with a muffler integrated flap.

The control unit processes the CAN-bus signals and passes it via the actuator to the exhaust flap. This leads in dependence on engine parameters and drive conditions to an accurate triggering of the flap to optimize the sound under consideration of legal guidelines.

In addition to this the sound can be modulated via a handle bar mounted push button switch. In any situation the complex electronic ensures in dependency of rev, speed and gear the compliance with sound regulations stated in the EC homologation.

- für / for Sportster, Dyna & Softail



Deaktivierungsstecker für Serienklappe / deactivating plug for serial valve (RACING - no EG/ABE/EEC)

- für / for Touring



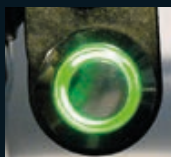
- für / for Touring



- für ausgewählte Modelle / for selected models only



LED Ring AUS  
Klappe geschlossen /  
LED loop OFF  
valve closed



LED Ring GRÜN  
Klappe 10%  
geöffnet /  
LED loop GREEN  
valve 10% open



LED Ring GELB  
Klappe 40%  
geöffnet /  
LED loop YELLOW  
valve 40% open



LED Ring ROT  
Klappe 100%  
geöffnet /  
LED loop RED  
valve 100% open

- CAN-Bus gesteuertes Klappensystem / CAN-bus controlled valve system
- Soundmodulation per Taster / Sound modulation via push button switch
- Kerniger Sound / Hot sound
- Endkappen wählbar und wechselbar / Selectable and changeable end caps
- EG Genehmigung / EC homologation

# REMUS CUSTOM EXHAUSTS

Model	Year	Description	Type	Sleeve	Order no.	EUR excl. VAT.	EUR incl. VAT.
<b>HARLEY-DAVIDSON®</b>							
<b>XG1 Street 750</b>	14-	1 x CUSTOM exhaust rolled up Ø 102 mm (4")	EG/ABE/EEC	stainless steel black	007702 270214	490,00	588,00
<b>SPORTSTER, XR1</b>		PowerCone complete system no cat. (header polished)	Sport (no EG/ABE/EEC)	stainless steel	015682 239308	904,00	1084,80
XR 1200	08-	PowerCone complete system incl. cat. (header polished)	EG/ABE/EEC	stainless steel	115682 239308	1015,00	1218,00
XR 1200 X	09-	PowerCone complete system no cat. (header black)	Sport (no EG/ABE/EEC)	stainless steel black	015782 239308BS	1022,00	1226,40
		PowerCone complete system incl. cat. (header black)	EG/ABE/EEC	stainless steel black	115782 239308BS	1121,00	1345,20
<b>SPORTSTER, XL2</b>		PowerCone complete system incl. cat. (header black)	EG/ABE/EEC	stainless steel black	115782 239907BS	1133,00	1359,60
XL 883C Custom	07-13	<b>CUSTOM exhaust and selectable end cap design only fits as a complete system</b>					
XL 883L Sportster 883 Super Low		2 x CUSTOM exhaust incl cat., no end cap	EG/ABE/EEC	stainless steel chrome	007152 230507	965,00	1158,00
XL 883N Iron			EG/ABE/EEC	stainless steel black	007752 230507	1025,00	1230,00
XL 883R Sportster 883 Roadster		<b>Selectable end caps must be ordered separately</b>					
XL 1200C Sportster 1200 Custom	07-13	end cap slash-cut (2 pcs.)		stainless steel chrome	EK01	87,00	104,40
XL 1200N Nightster		end cap slash-cut (2 pcs.)		stainless steel black	EK71	107,00	128,40
XL 1200V Sportster Seventy-Two	12-13	end cap perforated (2 pcs.)		stainless steel chrome	EK02	87,00	104,40
XL 1200X Forty-Eight	10-13	end cap perforated (2 pcs.)		stainless steel black	EK72	107,00	128,40
		end cap tapered (2 pcs.)		stainless steel chrome	EK03	87,00	104,40
		end cap tapered (2 pcs.)		stainless steel black	EK73	107,00	128,40
		end cap rolled up (2 pcs.)		stainless steel chrome	EK05	87,00	104,40
		end cap rolled up (2 pcs.)		stainless steel black	EK75	107,00	128,40
		end cap sniper (2 pcs.)		stainless steel black	EK76	124,00	148,80
		2 x CUSTOM exhaust Straight-thru slash-cut (front/rear)	Race (no EG/ABE/EEC)	stainless steel black	007703 239010	341,00	409,20
<b>SPORTSTER, XL2</b>		<b>CUSTOM exhaust and selectable end cap design only fits as a complete system</b>					
XL 883L Sportster 883 Super Low	14-	2 x CUSTOM exhaust, no cat., no end cap, inlet cap/catalyst heat protection shield in sleeve colour		stainless steel chrome	007152 210514	785,00	942,00
XL 883N Iron	14-			stainless steel black	007752 210514	845,00	1014,00
XL 883R Sportster 883 Roadster	14-15	2 x CUSTOM exhaust, no cat., no end cap, inlet cap/catalyst heat protection shield in sleeve colour		stainless steel chrome	007152 280514	1490,00	1788,00
XL 1200C Sportster 1200 Custom	14-	<b>*SC15 - (CAN-BUS actuated sound system)</b>					
XL 1200C ANV 1200 Custom 110th Aniv. Edition	14-	EURO 3 catalytic converter set (2 pcs.)	EG/ABE/EEC		KAT013	160,00	192,00
XL 1200CA 1200 Custom Limited	14-	<b>The exhaust system has an EEC approval, but is only authorised for road use in combination with the catalytic converter.</b>					
XL 1200CB 1200 Custom Limited	14-	<b>Selectable end caps must be ordered separately</b>					
XL 1200V Sportster Seventy-Two	14-	end cap slash-cut (2 pcs.)		stainless steel chrome	EK10	87,00	104,40
XL 1200X Forty-Eight	14-	end cap slash-cut (2 pcs.)		stainless steel black	EK80	107,00	128,40
XL 1200T Super Low 1200	15-	end cap straight end (2 pcs.)		stainless steel chrome	EK11	124,00	148,80
		end cap straight end (2 pcs.)		stainless steel black	EK81	144,00	172,80
		end cap tapered (2 pcs.)		stainless steel chrome	EK12	87,00	104,40
		end cap tapered (2 pcs.)		stainless steel black	EK82	107,00	128,40
		Racing sound insert - set (2 pcs.) not for SC15!			DBMHD-02	80,00	96,00
		optional inlet cap/catalyst heat protection shield - set (2 pcs.)		stainless steel chrome	HBLHD1	105,00	126,00
				stainless steel black	HBLHD8	115,00	138,00
		"complete system (2-2) incl. end caps SNIPER		Edelstahl schwarz	017702 280014	2190,00	2628,00
		*SC15 - (CAN-BUS actuated sound system)"		stainless steel black	KAT013	160,00	192,00
		catalytic converter set (2 pcs.)	EG/ABE/EEC				
					017702 282014	1080,00	1296,00
		complete system (2-1) incl. conical CUSTOM exhaust		stainless steel black	KAT013	160,00	192,00
		<b>catalytic converter set (2 pcs.)</b>	EG/ABE/EEC				

Street 750 slip on, rolled up



Sportster 48 2-2 Kompletanlage / complete system, end cap "sniper"



slip on

screw on

Kompletanlage / complete system

**SPORT = Silencer with homologation number (sound level is within the tolerated limit), but without catalytic converter, therefore no EEC!**

**1)** While stocks last! **2)** EC-approval only for vehicles with a registration date before 1st July 2004. Specifications in the registration document have to match the actual conditions, i.e. the omission of the catalyser has to be reported to the licensing authority! A warranty of 24 months is given on all systems with EC-approval. No warranty on racing products. No warranty is given for small colour changes of the carbon!

**Technical changes and errors excepted!**

updates: [www.remus.eu](http://www.remus.eu)



Model	Year	Description	Type	Sleeve	Order no.	EUR excl. VAT.	EUR incl. VAT.
<b>HARLEY-DAVIDSON®</b>							
<b>SPORTSTER, XL2 (Euro 4)</b>							
<b>CUSTOM exhaust and selectable end cap design only fits as a complete system</b>							
XL1200C Custom	17-	2 x CUSTOM exhaust no cat., no end cap	EG/ABE/EEC	stainless steel chrome	007152 210517	785,00	942,00
XL1200X Forty-Eight	17-			stainless steel black	007752 210517	845,00	1014,00
XL1200T Superlow	17-	2 x CUSTOM exhaust no cat., no end cap		stainless steel chrome	007152 280517	1490,00	1788,00
XL1200CX Roadster	17-	<b>*SC15 - (CAN-BUS actuated sound system)</b>		stainless steel black	007752 280517	1550,00	1860,00
		EURO 4 catalytic converter set (2 pcs.)			KAT020	230,00	276,00
<b>The exhaust system has an EEC approval, but is only authorised for road use in combination with the catalytic converter.</b>							
<b>Selectable end caps must be ordered separately</b>							
		end cap slash-cut (2 pcs.)		stainless steel chrome	EK10	87,00	104,40
		end cap slash-cut (2 pcs.)		stainless steel black	EK80	107,00	128,40
		end cap straight end (2 pcs.)		stainless steel chrome	EK11	124,00	148,80
		end cap straight end (2 pcs.)		stainless steel black	EK81	144,00	172,80
		end cap tapered (2 pcs.)		stainless steel chrome	EK12	87,00	104,40
		end cap tapered (2 pcs.)		stainless steel black	EK82	107,00	128,40
		Racing sound insert - set (2 pcs.) not for SC15!			DBMHD-02	80,00	96,00
		optional cat. cover - set (2 pcs.)			HBLHD1	105,00	126,00
				Edelstahl schwarz	HBLHD8	115,00	138,00
<b>DYNA, FD2</b>							
<b>CUSTOM exhaust and selectable end cap design only fits as a complete system</b>							
FXDC Super Glide Custom	07-11	2 x CUSTOM exhaust no cat., no end cap, inlet cap/catalyst heat protection shield in sleeve colour	EG/ABE/EEC	stainless steel chrome	007152 210307	785,00	942,00
FXDB Street Bob				stainless steel black	007752 210307	845,00	1014,00
FXDBA Street Bob Limited		EURO 3 catalytic converter set (2 pcs.)			KAT013	160,00	192,00
FXDL Low Rider	05-08	<b>The exhaust system has an EEC approval, but is only authorised for road use in combination with the catalytic converter.</b>					
FXDWG Wide Glide	07-08	<b>Selectable end caps must be ordered separately</b>					
		end cap slash-cut (2 pcs.)		stainless steel chrome	EK10	87,00	104,40
		end cap slash-cut (2 pcs.)		stainless steel black	EK80	107,00	128,40
		end cap straight end (2 pcs.)		stainless steel chrome	EK11	124,00	148,80
		end cap straight end (2 pcs.)		stainless steel black	EK81	144,00	172,80
		end cap tapered (2 pcs.)		stainless steel chrome	EK12	87,00	104,40
		end cap tapered (2 pcs.)		stainless steel black	EK82	107,00	128,40
		Racing sound insert - set (2 pcs.)			DBMHD-02	80,00	96,00
		optional inlet cap/catalyst heat protection shield - set (2 pcs.)		stainless steel chrome	HBLHD1	105,00	126,00
				stainless steel black	HBLHD8	115,00	138,00
		FLAP-KILL (deactivating plug for serial valve)	Race (no EG/ABE/EEC)		HD001	21,00	25,20

Sportster 48  
2-1 Kompletanlage / complete system



Sportster 48  
slip on, end cap "straight end"

**EURO 4**



Street Bob  
slip on, end cap "rolled up"



**SPORT = Silencer with homologation number (sound level is within the tolerated limit), but without catalytic converter, therefore no EEC!**  
 1) While stocks last! 2) EC-approval only for vehicles with a registration date before 1st July 2004. Specifications in the registration document have to match the actual conditions, i.e. the omission of the catalyser has to be reported to the licensing authority! A warranty of 24 months is given on all systems with EC-approval. No warranty on racing products. No warranty is given for small colour changes of the carbon!  
**Technical changes and errors excepted!**



Kompletanlage / complete system



screw on



slip on

# REMUS CUSTOM EXHAUSTS

Model	Year	Description	Type	Sleeve	Order no.	EUR excl. VAT.	EUR incl. VAT.
<b>HARLEY-DAVIDSON®</b>							
<b>DYNA, FD2</b>							
<b>CUSTOM exhaust and selectable end cap design only fits as a complete system</b>							
FXDC Super Glide Custom	12-14	2 x CUSTOM exhaust no cat., no end cap, inlet cap/catalyst heat protection shield in sleeve colour	EG/ABE/EEC	stainless steel chrome	007152 210307	785,00	942,00
FXDB Street Bob	12-			stainless steel black	007752 210307	845,00	1014,00
FXDBA Street Bob Limited	12-	2 x CUSTOM exhaust no cat., no end cap, inlet cap/catalyst heat protection shield in sleeve colour		stainless steel chrome	007152 280312	1490,00	1788,00
FXDBC Street Bob Limited	16-	<b>*SC15 - (CAN-BUS actuated sound system)</b>		stainless steel black	007752 280312	1550,00	1860,00
		EURO 3 catalytic converter set (2 pcs.)			KAT013	160,00	192,00
<b>The exhaust system has an EEC approval, but is only authorised for road use in combination with the catalytic converter.</b>							
<b>Selectable end caps must be ordered separately</b>							
		end cap slash-cut (2 pcs.)		stainless steel chrome	EK10	87,00	104,40
		end cap slash-cut (2 pcs.)		stainless steel black	EK80	107,00	128,40
		end cap straight end (2 pcs.)		stainless steel chrome	EK11	124,00	148,80
		end cap straight end (2 pcs.)		stainless steel black	EK81	144,00	172,80
		end cap tapered (2 pcs.)		stainless steel chrome	EK12	87,00	104,40
		end cap tapered (2 pcs.)		stainless steel black	EK82	107,00	128,40
		Racing sound insert - set (2 pcs.) not for SC15!			DBMHD-02	80,00	96,00
		optional inlet cap/catalyst heat protection shield - set (2 pcs.)		stainless steel chrome	HBLHD1	105,00	126,00
				stainless steel black	HBLHD8	115,00	138,00
		FLAP-KILL (deactivating plug for serial valve)	Race (no EG/ABE/EEC)		HD001	21,00	25,20
<b>DYNA, FD2</b>							
<b>CUSTOM exhaust and selectable end cap design only fits as a complete system</b>							
FXDF Fat Bob	08-11	2 x CUSTOM exhaust, no cat., no end cap	EG/ABE/EEC	stainless steel chrome	007102 230408	830,00	996,00
FXDWG Wide Glide	09-11		EG/ABE/EEC	stainless steel black	007702 230408	890,00	1068,00
<b>Selectable end caps must be ordered separately</b>							
		end cap slash-cut (2 pcs.)		stainless steel chrome	EK01	87,00	104,40
		end cap slash-cut (2 pcs.)		stainless steel black	EK71	107,00	128,40
		end cap perforated (2 pcs.)		stainless steel chrome	EK02	87,00	104,40
		end cap perforated (2 pcs.)		stainless steel black	EK72	107,00	128,40
		end cap tapered (2 pcs.)		stainless steel chrome	EK03	87,00	104,40
		end cap tapered (2 pcs.)		stainless steel black	EK73	107,00	128,40
		end cap rolled up (2 pcs.)		stainless steel chrome	EK05	87,00	104,40
		end cap rolled up (2 pcs.)		stainless steel black	EK75	107,00	128,40
		end cap sniper (2 pcs.)		stainless steel black	EK76	124,00	148,80
		FLAP-KILL (deactivating plug for serial valve)	Race (no EG/ABE/EEC)		HD001	21,00	25,20

Low Rider  
slip on, "slash cut"



Fat Bob  
slip on, end cap "tapered"



**SPORT = Silencer with homologation number (sound level is within the tolerated limit), but without catalytic converter, therefore no EEC!**

**1)** While stocks last! **\*)** EC-approval only for vehicles with a registration date before 1st July 2004. Specifications in the registration document have to match the actual conditions, i.e. the omission of the catalyser has to be reported to the licensing authority! A warranty of 24 months is given on all systems with EC-approval. No warranty on racing products. No warranty is given for small colour changes of the carbon!

**Technical changes and errors excepted!**



Model	Year	Description	Type	Sleeve	Order no.	EUR excl. VAT.	EUR incl. VAT.	
<b>HARLEY-DAVIDSON®</b>								
<b>DYNA, FD2</b>		<b>CUSTOM exhaust and selectable end cap design only fits as a complete system</b>						
FXDF Fat Bob	12-	2 x CUSTOM exhaust, no cat., no end cap	EG/ABE/EEC	stainless steel chrome	007102 230408	830,00	996,00	
FXDWG Wide Glide				stainless steel black	007702 230408	890,00	1068,00	
			2 x CUSTOM exhaust, no cat., no end cap	EG/ABE/EEC	stainless steel chrome	007102 290412	1480,00	1776,00
			<b>*SC15 - (CAN-BUS actuated sound system)</b>	EG/ABE/EEC	stainless steel black	007702 290412	1540,00	1848,00
			<b>Selectable end caps must be ordered separately</b>					
			end cap slash-cut (2 pcs.)		stainless steel chrome	EK01	87,00	104,40
			end cap slash-cut (2 pcs.)		stainless steel black	EK71	107,00	128,40
			end cap perforated (2 pcs.)		stainless steel chrome	EK02	87,00	104,40
			end cap perforated (2 pcs.)		stainless steel black	EK72	107,00	128,40
			end cap tapered (2 pcs.)		stainless steel chrome	EK03	87,00	104,40
			end cap tapered (2 pcs.)		stainless steel black	EK73	107,00	128,40
			end cap rolled up (2 pcs.)		stainless steel chrome	EK05	87,00	104,40
			end cap rolled up (2 pcs.)		stainless steel black	EK75	107,00	128,40
			end cap sniper (2 pcs.)		stainless steel black	EK76	124,00	148,80
			FLAP-KILL (deactivating plug for serial valve)	Race (no EG/ABE/EEC)		HD001	21,00	25,20
<b>DYNA, FD2</b>		1 x CUSTOM exhaust slash-cut	EG/ABE/EEC	stainless steel chrome	007102 229011	520,00	624,00	
FLD Switchback	11-	(heat protection shield for Low Rider must be ordered separately)	EG/ABE/EEC	stainless steel black	007702 229011	550,00	660,00	
FXDL Low Rider								
	14-	1 x CUSTOM exhaust straight end	EG/ABE/EEC	stainless steel chrome	007102 229211	520,00	624,00	
		(heat protection shield for Low Rider must be ordered separately)	EG/ABE/EEC	stainless steel black	007702 229211	550,00	660,00	
		1 x CUSTOM exhaust Straight-thru slash-cut	Race (no EG/ABE/EEC)	stainless steel chrome	007103 229011	205,00	246,00	
		(heat protection shield for Low Rider must be ordered separately)					0,00	
		heat protection shield for FXDL Low Rider		stainless steel chrome	229011HBL	82,00	98,40	
<b>SOFTAIL, FS2</b>								
	07-10	<b>CUSTOM exhaust and selectable end cap design only fits as a complete system</b>						
FLSTC Heritage Softail Classic			2 x CUSTOM exhaust, no cat., no end cap, inlet cap/catalyst heat protection shield in sleeve colour		stainless steel chrome	007152 210107	785,00	942,00
FXSTB Night Train					stainless steel black	007752 210107	845,00	1014,00
FXSTC Softail Custom			EURO 3 catalytic converter set (2 pcs.)	EG/ABE/EEC		KAT013	160,00	192,00
FXCW Rocker			<b>The exhaust system has an EEC approval, but is only authorised for road use in combination with the catalytic converter.</b>					
FXCWC Rocker C			<b>Selectable end caps must be ordered separately</b>					
			end cap slash-cut (2 pcs.)		stainless steel chrome	EK10	87,00	104,40
			end cap slash-cut (2 pcs.)		stainless steel black	EK80	107,00	128,40
			end cap straight end (2 pcs.)		stainless steel chrome	EK11	124,00	148,80
			end cap straight end (2 pcs.)		stainless steel black	EK81	144,00	172,80
		end cap tapered (2 pcs.)		stainless steel chrome	EK12	87,00	104,40	
		end cap tapered (2 pcs.)		stainless steel black	EK82	107,00	128,40	
		Racing sound insert - set (2 pcs.)			DBMHD-02	80,00	96,00	
		optional inlet cap/catalyst heat protection shield - set (2 pcs.)		stainless steel chrome	HBLHD1	105,00	126,00	
				stainless steel black	HBLHD8	115,00	138,00	
		FLAP-KILL (deactivating plug for serial valve)	Race (no EG/ABE/EEC)		HD001	21,00	25,20	

Switchback slip on, straight end



Softail Deluxe slip on, end cap "perforated"



**SPORT** = Silencer with homologation number (sound level is within the tolerated limit), but without catalytic converter, therefore no EEC!  
 1) While stocks last! 2) EC-approval only for vehicles with a registration date before 1st July 2004. Specifications in the registration document have to match the actual conditions, i.e. the omission of the catalyser has to be reported to the licensing authority! A warranty of 24 months is given on all systems with EC-approval. No warranty on racing products. No warranty is given for small colour changes of the carbon!  
**Technical changes and errors excepted!**

updates: [www.remus.eu](http://www.remus.eu)



Kompletanlage / complete system



screw on



slip on

# REMUS CUSTOM EXHAUSTS

Model	Year	Description	Type	Sleeve	Order no.	EUR excl. VAT.	EUR incl. VAT.
<b>HARLEY-DAVIDSON®</b>							
<b>SOFTAIL, FS2</b>							
<b>CUSTOM exhaust and selectable end cap design only fits as a complete system</b>							
FLSTC Heritage Softail Classic	11-	2 x CUSTOM exhaust, no cat., no end cap, inlet cap/catalyst heat protection shield in sleeve colour	EG/ABE/EEC	stainless steel chrome	007152 210107	785,00	942,00
FXCWC Rocker C	11			stainless steel black	007752 210107	845,00	1014,00
FXSB Breakout	13-	2 x CUSTOM exhaust no cat., no end cap, inlet cap/catalyst heat protection shield in sleeve colour		stainless steel chrome	007152 280111	1490,00	1788,00
FXSBSE Breakout CVO	14	<b>*SC15 - (CAN-BUS actuated sound system)</b>		stainless steel black	007752 280111	1550,00	1860,00
FLSTNSE CVO Softail Deluxe	14-15	EURO 3 catalytic converter set (2 pcs.)			KAT013	160,00	192,00
<b>The exhaust system has an EEC approval, but is only authorised for road use in combination with the catalytic converter.</b>							
<b>Selectable end caps must be ordered separately</b>							
end cap slash-cut (2 pcs.)				stainless steel chrome	EK10	87,00	104,40
end cap slash-cut (2 pcs.)				stainless steel black	EK80	107,00	128,40
end cap straight end (2 pcs.)				stainless steel chrome	EK11	124,00	148,80
end cap straight end (2 pcs.)				stainless steel black	EK81	144,00	172,80
end cap tapered (2 pcs.)				stainless steel chrome	EK12	87,00	104,40
end cap tapered (2 pcs.)				stainless steel black	EK82	107,00	128,40
Racing sound insert - set (2 pcs.) not for SC15!					DBMHD-02	80,00	96,00
optional inlet cap/catalyst heat protection shield - set (2 pcs.)				stainless steel chrome	HBLHD1	105,00	126,00
				stainless steel black	HBLHD8	115,00	138,00
FLAP-KILL (deactivating plug for serial valve) - not for CVO - models			Race (no EG/ABE/EEC)		HD001	21,00	25,20
<b>SOFTAIL, FS2</b>							
<b>CUSTOM exhaust and selectable end cap design only fits as a complete system</b>							
FLSTF Fat Boy	07-	2 x CUSTOM exhaust, no cat., no end cap, inlet cap/catalyst heat protection shield in sleeve colour	EG/ABE/EEC	stainless steel chrome	007152 210007	785,00	942,00
FLSTFB Fat Boy Special	09-			stainless steel black	007752 210007	845,00	1014,00
Fat Boy S	16-	EURO 3 catalytic converter set (2 pcs.)				KAT013	160,00
<b>The exhaust system has an EEC approval, but is only authorised for road use in combination with the catalytic converter.</b>							
<b>Selectable end caps must be ordered separately</b>							
end cap slash-cut (2 pcs.)				stainless steel chrome	EK10	87,00	104,40
end cap slash-cut (2 pcs.)				stainless steel black	EK80	107,00	128,40
end cap straight end (2 pcs.)				stainless steel chrome	EK11	124,00	148,80
end cap straight end (2 pcs.)				stainless steel black	EK81	144,00	172,80
end cap tapered (2 pcs.)				stainless steel chrome	EK12	87,00	104,40
end cap tapered (2 pcs.)				stainless steel black	EK82	107,00	128,40
Racing sound insert - set (2 pcs.) not for SC15!					DBMHD-02	80,00	96,00
optional inlet cap/catalyst heat protection shield - set (2 pcs.)				stainless steel chrome	HBLHD1	105,00	126,00
				stainless steel black	HBLHD8	115,00	138,00
FLAP-KILL (deactivating plug for serial valve)			Race (no EG/ABE/EEC)		HD001	21,00	25,20

Heritage Softail  
slip on, end cap "perforated"



Breakout  
slip on, end cap "slash cut"



**SPORT = Silencer with homologation number (sound level is within the tolerated limit), but without catalytic converter, therefore no EEC!**

**1)** While stocks last! **\*)** EC-approval only for vehicles with a registration date before 1st July 2004. Specifications in the registration document have to match the actual conditions, i.e. the omission of the catalyser has to be reported to the licensing authority! A warranty of 24 months is given on all systems with EC-approval. No warranty on racing products. No warranty is given for small colour changes of the carbon!

**Technical changes and errors excepted!**

updates: [www.remus.eu](http://www.remus.eu)



Model	Year	Description	Type	Sleeve	Order no.	EUR excl. VAT.	EUR incl. VAT.
<b>HARLEY-DAVIDSON®</b>							
<b>SOFTAIL, FS2</b>							
FLSTN Softail Deluxe	07-10	<b>CUSTOM exhaust and selectable end cap design only fits as a complete system</b> 2 x CUSTOM exhaust, no cat., no end cap, inlet cap/catalyst heat protection shield in sleeve colour		stainless steel chrome	007152 210211	785,00	942,00
FLSTSB Cross Bones	08-10			stainless steel black	007752 210211	845,00	1014,00
		EURO 3 catalytic converter set (2 pcs.)	EG/ABE/EEC		KAT013	160,00	192,00
<b>The exhaust system has an EEC approval, but is only authorised for road use in combination with the catalytic converter.</b>							
<b>Selectable end caps must be ordered separately</b>							
		end cap slash-cut (2 pcs.)		stainless steel chrome	EK10	87,00	104,40
		end cap slash-cut (2 pcs.)		stainless steel black	EK80	107,00	128,40
		end cap straight end (2 pcs.)		stainless steel chrome	EK11	124,00	148,80
		end cap straight end (2 pcs.)		stainless steel black	EK81	144,00	172,80
		end cap tapered (2 pcs.)		stainless steel chrome	EK12	87,00	104,40
		end cap tapered (2 pcs.)		stainless steel black	EK82	107,00	128,40
		Racing sound insert - set (2 pcs.) not for SC15!			DBMHD-02	80,00	96,00
		optional inlet cap/catalyst heat protection shield - set (2 pcs.)		stainless steel chrome	HBLHD1	105,00	126,00
				stainless steel black	HBLHD8	115,00	138,00
		FLAP-KILL (deactivating plug for serial valve)	Race (no EG/ABE/EEC)		HD001	21,00	25,20
<b>SOFTAIL, FS2</b>							
FLSTN Softail Deluxe	11-	<b>CUSTOM exhaust and selectable end cap design only fits as a complete system</b> 2 x CUSTOM exhaust, no cat., no end cap, inlet cap/catalyst heat protection shield in sleeve colour		stainless steel chrome	007152 210211	785,00	942,00
FLS Softail Slim	12-			stainless steel black	007752 210211	845,00	1014,00
FLSTSB Cross Bones	11	2 x CUSTOM exhaust, no cat., no end cap, inlet cap/catalyst heat protection shield in sleeve colour		stainless steel chrome	007152 280211	1490,00	1788,00
FXS Blackline	11-13	<b>*SC15 - (CAN-BUS actuated sound system)</b>		stainless steel black	007752 280211	1550,00	1860,00
FLSS Softail Slim S	16-	EURO 3 catalytic converter set (2 pcs.)	EG/ABE/EEC		KAT013	160,00	192,00
<b>The exhaust system has an EEC approval, but is only authorised for road use in combination with the catalytic converter.</b>							
<b>Selectable end caps must be ordered separately</b>							
		end cap slash-cut (2 pcs.)		stainless steel chrome	EK10	87,00	104,40
		end cap slash-cut (2 pcs.)		stainless steel black	EK80	107,00	128,40
		end cap straight end (2 pcs.)		stainless steel chrome	EK11	124,00	148,80
		end cap straight end (2 pcs.)		stainless steel black	EK81	144,00	172,80
		end cap tapered (2 pcs.)		stainless steel chrome	EK12	87,00	104,40
		end cap tapered (2 pcs.)		stainless steel black	EK82	107,00	128,40
		Racing sound insert - set (2 pcs.) not for SC15!			DBMHD-02	80,00	96,00
		optional inlet cap/catalyst heat protection shield - set (2 pcs.)		stainless steel chrome	HBLHD1	105,00	126,00
				stainless steel black	HBLHD8	115,00	138,00
		FLAP-KILL (deactivating plug for serial valve)	Race (no EG/ABE/EEC)		HD001	21,00	25,20

Softail Slim S  
slip on, end cap "slash cut"



Softail Slim S  
slip on, end cap "slash cut"



SPORT = Silencer with homologation number (sound level is within the tolerated limit), but without catalytic converter, therefore no EEC!  
 1) While stocks last! 2) EC-approval only for vehicles with a registration date before 1st July 2004. Specifications in the registration document have to match the actual conditions, i.e. the omission of the catalyser has to be reported to the licensing authority! A warranty of 24 months is given on all systems with EC-approval. No warranty on racing products. No warranty is given for small colour changes of the carbon!  
 Technical changes and errors excepted!

updates: [www.remus.eu](http://www.remus.eu)



# REMUS CUSTOM EXHAUSTS

Model	Year	Description	Type	Sleeve	Order no.	EUR excl. VAT.	EUR incl. VAT.	
<b>HARLEY-DAVIDSON®</b>								
<b>TOURING, FL2</b>								
<b>CUSTOM exhaust and selectable end cap design only fits as a complete system</b>								
FLHR Road King	09-13	2 x CUSTOM exhaust Ø 102 mm (4") no cat., no end cap	EG/ABE/EEC	stainless steel chrome	007102 272009LR	890,00	1068,00	
FLHRC Road King Classic				EG/ABE/EEC	stainless steel black	007702 272009LR	950,00	1140,00
FLHT Electra Glide		<b>Selectable end caps must be ordered separately</b>						
FLHTC Electra Glide Custom		end cap slash-cut (2 pcs.)			stainless steel chrome	EK20	140,00	168,00
FLHTCU Ultra Classic Electra Glide		end cap slash-cut (2 pcs.)			stainless steel black	EK90	160,00	192,00
FLHX Street Glide		end cap straight end (2 pcs.)			stainless steel chrome	EK21	140,00	168,00
FLTRX Road Glide Custom		end cap straight end (2 pcs.)			stainless steel black	EK91	160,00	192,00
FLHTK Electra Glide Ultra Limited		header (2-2) no cat. instead of OE header		Race (no EG/ABE/EEC)		0101 270014	499,00	598,80
FLHP Road King Police		(not combinable with ECS)						
FLHTP Electra Glide Police		FLAP-KILL (deactivating plug for serial valve) - not for CVO - models		Race (no EG/ABE/EEC)		HD001	21,00	25,20
FLTRU Road Glide Ultra								
FLHTCUSE CVO Ultra Classic Electra Glide								
FLHXSE CVO Street Glide								
FLTRUSE CVO Road Glide Ultra								
FLTRXSE CVO Road Glide								
FLHRSE CVO Road King								
<b>TOURING, FL3</b>								
<b>CUSTOM exhaust and selectable end cap design only fits as a complete system</b>								
FLHTK Electra Glide Ultra Limited	14	2 x CUSTOM exhaust Ø 102 mm (4") no cat., no end cap	EG/ABE/EEC	stainless steel chrome	007102 272009LR	890,00	1068,00	
FLHTP Electra Glide Police	14		EG/ABE/EEC	stainless steel black	007702 272009LR	950,00	1140,00	
FLHXS Street Glide Special	14	2 x CUSTOM exhaust Ø 102 mm (4") no cat., no end cap	EG/ABE/EEC	stainless steel chrome	007102 292014LR	1680,00	2016,00	
FLHRC Road King Classic	14-	<b>*SC15 - (CAN-BUS actuated sound system)</b>	EG/ABE/EEC	stainless steel black	007702 292014LR	1740,00	2088,00	
FLHX Street Glide	14-	<b>Selectable end caps must be ordered separately</b>						
FLHTCU TC Electra Glide Ultra Classic	14-	end cap slash-cut (2 pcs.)		stainless steel chrome	EK20	140,00	168,00	
FLTRXS Road Glide Special	14-	end cap slash-cut (2 pcs.)		stainless steel black	EK90	160,00	192,00	
FLHTKSE CVO Ultra Limited	14-	end cap straight end (2 pcs.)		stainless steel chrome	EK21	140,00	168,00	
FLHTSE CVO Road King	14-15	end cap straight end (2 pcs.)		stainless steel black	EK91	160,00	192,00	
FLTRUSE CVO Road Glide Ultra	15-	header (2-2) no cat. instead of OE header	Race (no EG/ABE/EEC)		0101 270014	499,00	598,80	
FLHXSE CVO Street Glide	15-							
FLHTCUL TC Electra Glide Ultra Classic Low	15-	FLAP-KILL (deactivating plug for serial valve) - not for CVO - models	Race (no EG/ABE/EEC)		HD001	21,00	25,20	
FLHTKL Electra Glide Ultra Limited Low	15-							
Road King	16-							
Road Glide Ultra	16-							



Road Glide slip on, Ø 102 mm end cap "straight end"

**EURO 4**



Krümmer (2-2) ohne Kat, anstelle Serienkrümmer / header (2-2) no cat. instead of OE header



**SPORT = Silencer with homologation number (sound level is within the tolerated limit), but without catalytic converter, therefore no EEC!**

**1)** While stocks last! **\*)** EC-approval only for vehicles with a registration date before 1st July 2004. Specifications in the registration document have to match the actual conditions, i.e. the omission of the catalyser has to be reported to the licensing authority! A warranty of 24 months is given on all systems with EC-approval. No warranty on racing products. No warranty is given for small colour changes of the carbon!

**Technical changes and errors excepted!**

updates: [www.remus.eu](http://www.remus.eu)



Model	Year	Description	Type	Sleeve	Order no.	EUR excl. VAT.	EUR incl. VAT
<b>HARLEY-DAVIDSON®</b>							
<b>TOURING, FL3 (Euro 4),</b>		<b>CUSTOM exhaust and selectable end cap design only fits as a complete system</b>					
Milwaukee Eight		2 x CUSTOM exhaust Ø 102 mm (4") no cat., no end cap	EG/ABE/EEC	stainless steel chrome	007102 272017LR	820,00	984,00
FLHR Road King	17-			stainless steel black	007702 272017LR	880,00	1056,00
FLHRC Road King Classic	17-	RACING Sound insert	Race (no EG/ABE/EEC)		DBMHD01	80,00	96,00
FLHXS Street Glide Special	17-	2 x CUSTOM exhaust Ø 102 mm (4") no cat., no end cap	EG/ABE/EEC	stainless steel chrome	007102 292017LR	1680,00	2016,00
FLTRXS Road Glide Special	17-	<b>*SC15 - (CAN-BUS actuated sound system)</b>		stainless steel black	007702 292017LR	1740,00	2088,00
FLTRU Road Glide Ultra	17-	<b>Selectable end caps must be ordered separately</b>					
FLHTK Electra Glide Ultra Limited	17-	end cap slash-cut (2 pcs.)		stainless steel chrome	EK22	140,00	168,00
FLHTKL Electra Glide Ultra Limited Low	17-	end cap slash-cut (2 pcs.)		stainless steel black	EK92	160,00	192,00
		end cap straight end (2 pcs.)		stainless steel chrome	EK23	140,00	168,00
		end cap straight end (2 pcs.)		stainless steel black	EK93	160,00	192,00
		header (2-2) no cat. instead of OE header (OE heat shields will be used)	Race (no EG/ABE/EEC)		0101 270017	499,00	598,80
		FLAP-KILL (deactivating plug for serial valve) - not for CVO - models	Race (no EG/ABE/EEC)		HD001	21,00	25,20
<b>VRSC, VR2</b>		2 x CUSTOM exhaust slash-cut (top/bottom)	EG/ABE/EEC	stainless steel chrome	007102 239005	770,00	924,00
VRSCR Street Rod	05-07	Attention: not for V-Rod VRSCA	EG/ABE/EEC	stainless steel black	007702 239005	830,00	996,00
<b>VRSC, VR1</b>							
VRSCD Night Rod	05-						
VRSCDX Night Rod Special	07-						
<b>VRSC, VR1</b>		2 x CUSTOM exhaust slash-cut (top/bottom)	EG/ABE/EEC	stainless steel chrome	007102 239005	770,00	924,00
VRSCD Night Rod	07-		EG/ABE/EEC	stainless steel black	007702 239005	830,00	996,00
VRSCDX Night Rod Special	12-	2 x CUSTOM exhaust Ø 102 mm (4"), no end cap	EG/ABE/EEC	stainless steel black	007702 279005	850,00	1020,00
		<b>Selectable end caps must be ordered separately</b>					
		end cap slash-cut (2 pcs.)		stainless steel chrome	EK20	140,00	168,00
		end cap slash-cut (2 pcs.)		stainless steel black	EK90BV	160,00	192,00
		end cap straight end (2 pcs.)		stainless steel chrome	EK21	140,00	168,00
		end cap straight end (2 pcs.)		stainless steel black	EK91BV	160,00	192,00
		complete system (2-2) incl. cat.	EG/ABE/EEC	stainless steel black	117752 238012	1490,00	1788,00

CVO Ultra Limited slip on, Ø 102 mm end cap "slash cut"



Night-Rod Special 2-2 Kompletanlage / complete system



Night-Rod Special slip on, Ø 102 mm end cap "rolled up" kurze Ausführung / short version



**SPORT = Silencer with homologation number (sound level is within the tolerated limit), but without catalytic converter, therefore no EEC!**  
 1) While stocks last! \*) EC-approval only for vehicles with a registration date before 1st July 2004. Specifications in the registration document have to match the actual conditions, i.e. the omission of the catalyser has to be reported to the licensing authority! A warranty of 24 months is given on all systems with EC-approval. No warranty on racing products. No warranty is given for small colour changes of the carbon!  
**Technical changes and errors excepted!**



## BUELL SPORTEXHAUSTS

mit EG Genehmigung / with EC homologation



- Breite x Höhe / Width x height: ~ 190 x 130 mm
- Schalldämpferlänge ~ 800 mm / Muffler length ~ 800 mm
- Mantelmaterial: Edelstahl / Sleeve material: Stainless steel
- Oberflächenbehandlung: matt kugelgestrahlt / schwarz beschichtet / elektrolytisch poliert  
Surface treatment: shot blasted matt / black coated / electrolytic polished
- Gewicht / Weight: 8,2 kg

Modell	Bj.	Ø mm	Beschreibung	Typ	Schalldämpfer	Mantel	Bestell Nr.	EUR exkl. MwSt.	EUR inkl. MwSt.
<b>Buell</b>									
<b>XB-12R Firebolt</b>	04-		slip on left/right (muffler)	EG/ABE/EEC	2x Ø94mm rund	stainless steel polished	092782 098004LR	925,00	1110,00
<b>XB-12S Lightning</b>				EG/ABE/EEC	2x Ø94mm rund	stainless steel matt	092782 098004LRM	925,00	1110,00
XB1, 74.6 kW									
<b>XB-12Ss Lightning</b>	05-								
XB2, 74.6 kW									
<b>XB-9SX Lightning</b>	08-		slip on left/right (muffler)	EG/ABE/EEC	2x Ø 90 mm rund	stainless steel black	092782 098008LRB	951,00	1141,20
XB1, 60 kW			Stainless steel belt cover for XB2 models	Abdeckung/cover	stainless steel black	098008B	23,00	27,60	
<b>XB-12S Lightning</b>	08-								
<b>XB-12Scg Lightning</b>	08-								
XB-1, 70 kW									
<b>XB-12XT, XB-12X</b>									
<b>XB-12Ss Lightning</b>	08-								
<b>XB-12STT Lightning</b>	08-								
XB2, 70 kW									

XB-12STT slip on



XB-12STT slip on



**SPORT = Silencer with homologation number (sound level is within the tolerated limit), but without catalytic converter, therefore no EEC!**

**1)** While stocks last! **\*)** EC-approval only for vehicles with a registration date before 1st July 2004. Specifications in the registration document have to match the actual conditions, i.e. the omission of the catalyser has to be reported to the licensing authority! A warranty of 24 months is given on all systems with EC-approval. No warranty on racing products. No warranty is given for small colour changes of the carbon!

Technical changes and errors excepted!

updates: [www.remus.eu](http://www.remus.eu)



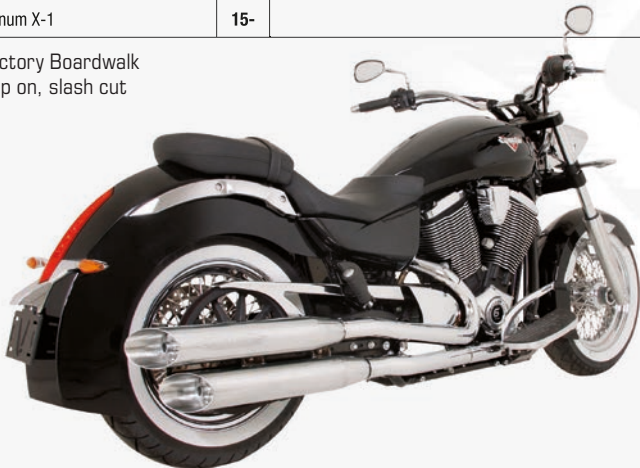
## CUSTOM EXHAUST CRUISERS / TOURING / BAGGERS

mit EG Genehmigung / with EC homologation



Modell	Bj.	Beschreibung	Typ	Mantel	Bestell-Nr.	EUR exkl. MwSt.	EUR inkl. MwSt.
<b>VICTORY</b>							
<b>CRUISERS</b>							
		2 x CUSTOM exhaust slash-cut incl. Cat. (top/bottom)	EG/ABE/EEC	stainless steel chrome	007152 509013	1179,00	1414,80
Vegas 8-Ball	09-		EG/ABE/EEC	stainless steel black	007752 509013	1179,00	1414,80
Vegas Zach Ness	12						
Vegas Jackpot	09-12						
Highball	12-						
Hammer 8-Ball	10-						
Hammer S	09-						
Boardwalk	12-						
Judge	12-						
Jackpot	10-						
<b>TOURING</b>							
		2 x CUSTOM exhaust slash-cut (left/right) incl. Cat. Ø 102 mm (4 inches)	EG/ABE/EEC	stainless steel chrome	007152 509113LR	1452,00	1742,40
Cross Country Tour	12-		EG/ABE/EEC	stainless steel black	007752 509113LR	1452,00	1742,40
Cory Ness Cross Country Tour	12						
<b>BAGGERS</b>							
Cross Country	10-						
Zach Ness Cross Country	13						
Hard-Ball	12-						
Cross Roads	10-12						
Cross Roads Classic	12-						
Cross Roads Deluxe	12						
Magnum	15-						
Magnum X-1	15-						

Victory Boardwalk slip on, slash cut



Victory Cross Roads slip on, slash cut Ø 102 mm (4 inch)



**SPORT** = Silencer with homologation number (sound level is within the tolerated limit), but without catalytic converter, therefore no EEC!  
**1)** While stocks last! **\*)** EC-approval only for vehicles with a registration date before 1st July 2004. Specifications in the registration document have to match the actual conditions, i.e. the omission of the catalyser has to be reported to the licensing authority! A warranty of 24 months is given on all systems with EC-approval. No warranty on racing products. No warranty is given for small colour changes of the carbon!  
**Technical changes and errors excepted!**





# SCOOTER





# RSC DUAL FLOW SPORTEXHAUST

mit EG Genehmigung / with EC homologation & Racing



- Doppel-Zylindrische Form / Double-Cylindrical shape
- Durchmesser / Diameter: 2x Ø 84 mm
- Mantellänge / Sleeve length: 220mm
- Mantelmaterialien: Edelstahl, Edelstahl black, Carbon / Sleeve materials: Stainless steel, Stainless steel black, Carbon
- Einlasskappe: Edelstahl / Inlet cap: Stainless steel
- Endkappe: Kunststoff / End cap: Plastic compound material
- Gewicht / Weight: ab / from 2,30 kg

Vespa GTS 300 ie Super  
REMUS RSC dual flow Slip on



EURO 4



## EDIZIONE SPORTIVA

REMUS RSC dual flow & REMUS Performance air filter.

Vespa GTS 300 ie  
REMUS RSC dual flow Slip on  
Edizione Sportiva REMUS  
mit EG Genehmigung / including EC homologation



Paket bestehend aus REMUS RSC dual flow Sportschalldämpfer und gratis REMUS Performance Luftfilter.  
Package includes a REMUS RSC dual flow sport exhaust and a free REMUS Performance air filter.

## **SCOOTER SPORTEXHAUST**

mit EG Genehmigung / with EC homologation & Racing



- Hexagonale Form / Hexagonal geometry
- Breite x Höhe / Width x height:  
~ 105 x 137 mm
- Mantellänge / Sleeve length:  
250 - 300 mm, (Motorradabhängig /  
depends on motorcycle)
- Mantelmaterialien: Edelstahl,  
Edelstahl black, Carbon /  
Sleeve materials: Stainless steel,  
Stainless steel black, Carbon
- Einlasskappe: Edelstahl /  
Inlet cap: Stainless steel
- Endkappe: Kunststoff /  
End cap: Plastic compound material
- Gewicht / Weight: ab / from 2,82 kg



## **RSC SPORTEXHAUST**

mit EG Genehmigung / with EC homologation & Racing



- Ovale Form / oval shape
- Breite x Höhe / Width x height:  
~ 100 x 134 mm
- Mantellänge / Sleeve length:  
250 - 300 mm, (Motorradabhängig /  
depends on motorcycle)
- Mantelmaterialien: Edelstahl und  
Carbon / Sleeve materials: Stainless  
steel and Carbon
- Einlasskappe: Edelstahl Hochglanz /  
Inlet cap: Stainless steel highly polished
- Endkappe: Kunststoff mit REMUS  
Emblem / End cap: Plastic compound  
material with REMUS Logo
- Gewicht / Weight: ab / from 1,70 kg





# BREMSHEBEL / BRAKE LEVERS

Individuell einstellbar / Individually adjustable



passend für: / suitable for:

GT 125: 03-07, GT 200: 03-06, GTS 125: 07, GTS 250: 05, GTS 300: 08, GTV 125: 07, GTV 250: 06, GTV 300: 08, LX 125: 05, LX 150: 05, LX 250: 05, LX 125: 11, LX 150: 11, Primavera 50 2T: 13, Primavera 50 4T: 13, Primavera 125 4T 3V: 13, Primavera 150 4T 3V: 13, Sprint 50 2T: 14, Sprint 50 4T: 14, Sprint 125 4T: 14



- Hebelabstand 20-fach einstellbar / Lever position adjustable in 20 positions
- Aus hochwertigem Aluminium CNC gefräst / CNC machined from high grade aluminium
- Edelstahl Schrauben / Stainless steel hardware
- Länge stufenlos einstellbar / Lever length continuously variable
- schwarz oder titan eloxiert / black or titanium anodized
- Made in Austria
- mit EG/ABE Genehmigung / with EC homologation

Model	Year	Ø mm	Description	Type	Muffler	Sleeve	Order no.	EUR excl. VAT	EUR incl. VAT
<b>BMW</b>									
<b>C 600 Sport</b>	<b>12-15</b>		slip on (muffler)	EG/ABE/EEC	HEXACONE	titanium	094882 084012	<b>546,00</b>	<b>655,20</b>
<b>C 650 GT</b>									
<b>C650 Sport</b>	<b>16-</b>	<b>54</b>	slip on (muffler with connecting tube)	EG/ABE/EEC	HEXACONE	stainless steel	054682 084516	<b>538,00</b>	<b>645,60</b>
<b>C650 GT</b>	<b>16-</b>			EG/ABE/EEC	HEXACONE	carbon	054482 084516	<b>613,00</b>	<b>735,60</b>
3C65 , 44kW				EG/ABE/EEC	HEXACONE	titanium	054882 084516	<b>598,00</b>	<b>717,60</b>
				EG/ABE/EEC	BLACK HAWK	stainless steel black	0564782 084516	<b>557,00</b>	<b>668,40</b>
<b>HONDA</b>									
<b>Integra 700</b>	<b>12-</b>	<b>54</b>	slip on (muffler with connecting tube)	EG/ABE/EEC	Sportexhaust	stainless steel	0524682 254512	<b>383,00</b>	<b>459,60</b>
38 kW				EG/ABE/EEC	Sportexhaust	carbon	0524482 254512	<b>469,00</b>	<b>562,80</b>
<b>PIAGGIO</b>									
<b>Beverly 300ie</b>	<b>11-</b>	<b>55</b>	"complete system incl. heat shield (only incl. catalytic converter street-legal)"	EG/ABE/EEC	Sportexhaust	stainless steel	0124682 751611	<b>430,00</b>	<b>516,00</b>
M69, 16.3 kW							KAT010	<b>74,00</b>	<b>88,80</b>
<b>The exhaust system has an EEC approval, but is only authorised for road use in combination with the catalytic converter.</b>									
<b>Beverly 350 ie</b>	<b>12-</b>	<b>55</b>	slip on (muffler with connecting tube) no cat. incl. heat shield	Race (no EG/ABE/EEC)	Sportexhaust	stainless steel	0524683 751812	<b>418,00</b>	<b>501,60</b>
<b>MP3 Sport 500 ie LT</b>	<b>14-</b>	<b>55</b>	slip on (muffler with connecting tube) incl. heat protection shield	EG/ABE/EEC	Sportexhaust	stainless steel	0524682 753015	<b>394,00</b>	<b>472,80</b>
<b>MP3 Business 500 ie LT</b>			(only incl. catalytic converter street-legal)		Sportexhaust	stainless steel black	0524782 753015	<b>423,00</b>	<b>507,60</b>
29.5 kW					Sportexhaust	carbon	0524482 753015	<b>480,00</b>	<b>576,00</b>
			catalytic converter				KAT010	<b>74,00</b>	<b>88,80</b>
<b>SUZUKI</b>									
<b>Burgman 200</b>	<b>10-</b>	<b>55</b>	"slip on (muffler with connecting tube) incl. heat shield (only incl. catalytic converter street-legal)"		Sportexhaust	Edelstahl	0524682 851510	<b>378,00</b>	<b>453,60</b>
13.5 kW					Sportexhaust	stainless steel	KAT010	<b>74,00</b>	<b>88,80</b>
<b>The exhaust system has an EEC approval, but is only authorised for road use in combination with the catalytic converter.</b>									

BMW C 650 Sport  
Black Hawk



BMW C 650 GT  
HexaCone



HONDA Integra 700  
Scooter Sportexhaust



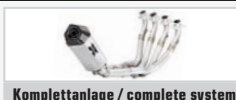
Piaggio Beverly 350 ie  
Scooter Sportexhaust



Piaggio MP3 Sport 500 ie LT  
Scooter Sportexhaust



SUZUKI Burgman 200  
Scooter Sportexhaust



**SPORT = Silencer with homologation number (sound level is within the tolerated limit), but without catalytic converter, therefore no EEC!**

**1)** While stocks last! **\*)** EC-approval only for vehicles with a registration date before 1st July 2004. Specifications in the registration document have to match the actual conditions, i.e. the omission of the catalyser has to be reported to the licensing authority! A warranty of 24 months is given on all systems with EC-approval. No warranty on racing products. No warranty is given for small colour changes of the carbon!

**Technical changes and errors excepted!**

updates: [www.remus.eu](http://www.remus.eu)



Model	Year	Ø mm	Description	Type	Muffler	Sleeve	Order no.	EUR excl. VAT	EUR incl. VAT
<b>VESPA</b>									
<b>LXV 125</b>	<b>09-</b>	<b>55</b>	complete system - no cat. no heat shield	SPORT	Sportexhaust	stainless steel	0124682 751110	<b>423,00</b>	<b>507,60</b>
<b>LX 125 ie</b> 7.9 kW	<b>11-</b>								
<b>SX 125 ie</b> 7.9 kW	<b>11-</b>								
<b>125 / GTS 125</b>	<b>09-</b>	<b>55</b>	slip on (muffler with connecting tube) no cat. incl. heat shield	SPORT	Sportexhaust	stainless steel	0524682 751010	<b>394,00</b>	<b>472,80</b>
<b>GT 200</b> 14.6 kW	<b>03-05</b>	<b>55</b>	slip on (muffler with connecting tube) no cat. VESPA brake levers left and right lever position and length adjustable, engraved REMUS logo	SPORT	Sportexhaust	stainless steel	0524682 751405	<b>389,00</b>	<b>466,80</b>
						black anodized	750012S-LR	<b>154,00</b>	<b>184,80</b>
						red anodized	750012R-LR	<b>154,00</b>	<b>184,80</b>
						titanium anodized	750012T-LR	<b>154,00</b>	<b>184,80</b>
<b>GTS 125 ie Super</b> M45, 11 kW	<b>09-</b>	<b>55</b>	slip on (silencer incl. connecting tube) no heat shield (only incl. catalytic converter street-legal)		Scooter RSC	Stainless steel	0534682 752510	<b>348,00</b>	<b>417,60</b>
<b>GTS 250 ie</b> M45, 15.7 kW	<b>05-</b>		slip on (muffler with connecting tube) incl. heat shield (only incl. catalytic converter street-legal)		Scooter RSC	Carbon	0534482 752510	<b>429,00</b>	<b>514,80</b>
<b>GTV 250 ie</b> M45, 15.7 kW	<b>06-</b>				Sportexhaust	stainless steel	0524682 751610	<b>394,00</b>	<b>472,80</b>
<b>GTS 300 ie</b> M45, 15.8 kW	<b>08-</b>		slip on (silencer incl. connecting tube) incl. heat shield (only incl. catalytic converter street-legal)		Sportexhaust	stainless steel black	0524782 751610	<b>423,00</b>	<b>507,60</b>
<b>GTS 300 ie Super</b> M45, 15.8 kW					Sportexhaust	carbon	0524482 751610	<b>480,00</b>	<b>576,00</b>
					RSC Dual Flow	Stainless steel	0554682 751508	<b>497,00</b>	<b>596,40</b>
					RSC Dual Flow	stainless steel black	0554782 751508	<b>540,00</b>	<b>648,00</b>
					RSC Dual Flow	Carbon	0554482 751508	<b>582,00</b>	<b>698,40</b>
					RSC Dual Flow	Stainless steel	0554682 751508ES	<b>524,00</b>	<b>628,80</b>
					RSC Dual Flow	stainless steel black	0554782 751508ES	<b>566,00</b>	<b>679,20</b>
					RSC Dual Flow	Carbon	0554482 751508ES	<b>608,00</b>	<b>729,60</b>
			catalytic converter	EG/ABE/EEC			KAT010	<b>74,00</b>	<b>88,80</b>
			RACING sound insert for Sportexhaust	Race (no EG/ABE/EEC)			DBM201V	<b>43,00</b>	<b>51,60</b>
			RACING sound insert for Scooter RSC	Race (no EG/ABE/EEC)			DBM202V	<b>43,00</b>	<b>51,60</b>
			RACING sound insert for lower RCS Dual Flow	Race (no EG/ABE/EEC)			DBM219SV	<b>43,00</b>	<b>51,60</b>
			VESPA brake levers left and right lever position and length adjustable, engraved REMUS logo			black anodized	750012S-LR	<b>154,00</b>	<b>184,80</b>
						red anodized	750012R-LR	<b>154,00</b>	<b>184,80</b>
						titanium anodized	750012T-LR	<b>154,00</b>	<b>184,80</b>
<b>The exhaust system has an EEC approval, but is only authorised for road use in combination with the catalytic converter.</b>									
<b>GTS 300 ie Super</b> MA3C, 15,6 kW (Euro 4)	<b>16-</b>		<b>in preparation</b>						

Vespa GTS 125 ie  
Scooter Sportexhaust

Vespa GTS 300 ie  
Dual Flow

Vespa GTS 300 ie Super  
Scooter Sportexhaust



**EURO 4**

**SPORT = Silencer with homologation number (sound level is within the tolerated limit), but without catalytic converter, therefore no EEC!**  
 1) While stocks last! \*) EC-approval only for vehicles with a registration date before 1st July 2004. Specifications in the registration document have to match the actual conditions, i.e. the omission of the catalyser has to be reported to the licensing authority! A warranty of 24 months is given on all systems with EC-approval. No warranty on racing products. No warranty is given for small colour changes of the carbon!  
**Technical changes and errors excepted!**

updates: [www.remus.eu](http://www.remus.eu)



Model	Year	Ø mm	Description	Type	Muffler	Sleeve	Order no.	EUR excl. VAT	EUR incl. VAT	
<b>VESPA</b>										
946 8.5 kW	13-	55	complete system no cat. incl. carbon heat protecting shield	EG/ABE/EEC	Sportexhaust	stainless steel	0124682 751113	464,00	556,80	
			(only incl. catalytic converter street-legal)		Sportexhaust	stainless steel black	0124782 751113	493,00	591,60	
					Sportexhaust	carbon	0124482 751113	550,00	660,00	
			catalytic converter				KAT010	74,00	88,80	
			<b>The exhaust system has an EEC approval, but is only authorised for road use in combination with the catalytic converter.</b>							
			RACING sound insert for Sportexhaust	Race (no EG/ABE/EEC)			DBM201V	43,00	51,60	
Vespa Primavera 125ie 3V Vespa Sprint 125ie 3V 7.9 kW LX 125 ie 3V LX 125 ie 3V Touring S 125 ie 3V (LXS 125 ie 3V) S 125 ie 3V Sport (LXS Sport 125 ie 3V) 8.5 kW	14-	55	complete system no heat shield	EG/ABE/EEC	Scooter RSC	stainless steel	0134682 752114	378,00	453,60	
	14-		(only incl. catalytic converter street-legal)		Scooter RSC	carbon	0134482 752114	465,00	558,00	
			catalytic converter				KAT010	74,00	88,80	
	12-		RACING sound insert for Scooter RSC		Race (no EG/ABE/EEC)			DBM202V	43,00	51,60
			complete system no cat. incl. heat shield		EG/ABE/EEC	Sportexhaust	stainless steel	0124682 751114	438,00	525,60
			(only incl. catalytic converter street-legal)			Sportexhaust	stainless steel black	0124782 751114	467,00	560,40
						Sportexhaust	carbon	0124482 751114	524,00	628,80
			catalytic converter					KAT010	74,00	88,80
			RACING sound insert for Sportexhaust			Race (no EG/ABE/EEC)			DBM201V	43,00
	<b>The exhaust system has an EEC approval, but is only authorised for road use in combination with the catalytic converter.</b>									
			VESPA brake levers left and right			black anodized	750014S-LR	154,00	184,80	
			lever position and length adjustable and engraved REMUS logo			titanium anodized	750014T-LR	154,00	184,80	
Vespa Primavera 125ie 3V Vespa Sprint 125ie 3V MA1A, 7.9 kW , (Euro 4)	16-	65	complete system no heat shield (only incl. catalytic converter street-legal)	EG/ABE/EEC	Scooter RSC	stainless steel	0134682 752116	378,00	453,60	
	16-				Scooter RSC	carbon	0134482 752116	465,00	558,00	
			catalytic converter (EURO 4)				KAT019	130,00	156,00	
			RACING sound insert for Scooter RSC		Race (no EG/ABE/EEC)			DBM202V	43,00	51,60
			complete system no cat. incl. heat shield (only incl. catalytic converter street-legal)		EG/ABE/EEC	Sportexhaust	stainless steel	0124682 751116	438,00	525,60
						Sportexhaust	stainless steel black	0124782 751116	467,00	560,40
						Sportexhaust	carbon	0124482 751116	524,00	628,80
			catalytic converter (EURO 4)				KAT019	130,00	156,00	
			RACING sound insert for Sportexhaust		Race (no EG/ABE/EEC)			DBM201V	43,00	51,60
	<b>The exhaust system has an EEC approval, but is only authorised for road use in combination with the catalytic converter.</b>									
			VESPA brake levers left and right lever position and length adjustable and engraved REMUS logo			schwarz eloxiert	750014S-LR	154,00	184,80	
						black anodized	750014T-LR	154,00	184,80	

Vespa 946  
Scooter Sportexhaust



Vespa Sprint 125ie 3V  
Scooter RSC



Vespa Primavera 125ie 3V  
Scooter RSC



**SPORT** = Silencer with homologation number (sound level is within the tolerated limit), but without catalytic converter, therefore no EEC!  
 1) While stocks last! \*1) EC-approval only for vehicles with a registration date before 1st July 2004. Specifications in the registration document have to match the actual conditions, i.e. the omission of the catalyser has to be reported to the licensing authority! A warranty of 24 months is given on all systems with EC-approval. No warranty on racing products. No warranty is given for small colour changes of the carbon!  
**Technical changes and errors excepted!**





STREETBIKES



# REMUS 8

mit EG Genehmigung / with EC homologation & Racing

**NEW  
PRODUCT**



- Oktogonale Form / Octagonal geometry
- L x B x H / L x W x H: 485 x 110 x 180 mm
- Mantelmaterial Edelstahl schwarz lackiert oder Edelstahl / Sleeve materials: Stainless steel black or stainless steel
- Einlasskappe: Edelstahl / Inlet cap: Stainless steel
- Endkappe: Carbon / End cap: Carbon
- Gewicht / Weight: 3,20 kg



# REMUS BLACK HAWK

mit EG Genehmigung / with EC homologation & Racing



- Hexagonale Form / Hexagonal geometry
- Breite x Höhe / Width x height: ~ 105 x 137 mm
- Mantellänge von 350 bis 420 mm, Motorradabhängig / Sleeve length from 350 to 420 mm, depends on motorcycle
- Mantelmaterial Edelstahl schwarz lackiert / Sleeve materials: Stainless steel black
- Einlasskappe: Edelstahl / Inlet cap: Stainless steel
- Endkappe: Carbon / End cap: Carbon
- Gewicht ab 1,96 kg / Weight: from 1,96 kg

## **REMUS HEXACONE**

mit EG Genehmigung / with EC homologation & Racing



- Hexagonale Form / Hexagonal geometry
- Breite x Höhe / Width x height:  
~ 105 x 137 mm
- Mantellänge von 250 bis 420 mm,  
Motorradabhängig /  
Sleeve length from 250 to 420 mm,  
depends on motorcycle
- Mantelmaterialien: Edelstahl, Carbon,  
Titan / Sleeve materials: Stainless steel,  
Carbon, Titanium
- Einlasskappe: Carbon / Inlet cap: Carbon
- Endkappe: Carbon / End cap: Carbon
- Gewicht / Weight: ab / from 1,54 kg



## **REMUS HYPERCONE**

mit EG Genehmigung / with EC homologation & Racing



- Konische Form / Conical geometry
- Durchmesser / Diameter:  
~ Ø 120 mm bis / up to ~ Ø 75 mm
- Mantellänge von 250 bis 400 mm,  
Motorradabhängig /  
Sleeve length from 250 to 400 mm,  
depends on motorcycle
- Mantelmaterialien: Edelstahl,  
Edelstahl black Carbon, Titan /  
Sleeve materials: Stainless steel,  
Stainless steel black, Carbon, Titanium
- Einlasskappe: Edelstahl /  
Inlet cap: Stainless steel
- Endkappe: Carbon / End cap: Carbon
- Gewicht / Weight: ab / from 1,28 kg



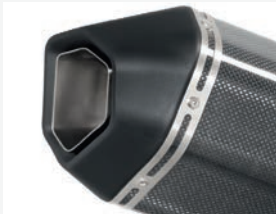


## REMUS OKAMI

mit EG Genehmigung / with EC homologation & Racing



- Hexagonale Form / Hexagonal geometry
- Breite x Höhe / Width x height: ~105 x 137 mm
- Mantellänge von 250 bis 420 mm, Motorradabhängig / Sleeve length from 250 to 420 mm, depends on motorcycle
- Mantelmaterialien: Edelstahl, Edelstahl black, Carbon, Titan / Sleeve materials: Stainless steel, Stainless steel black, Carbon, Titanium
- Einlasskappe: Edelstahl / Inlet cap: Stainless steel
- Endkappe: Kunststoff / End cap: Plastic compound material
- Gewicht / Weight: ab / from 1,54 kg



## REMUS POWERCONE

mit EG Genehmigung / with EC homologation & Racing



- Konische Form / Conical geometry
- Durchmesser / Diameter: ~ Ø 120 mm – ~ Ø 75 mm
- Mantellänge 250 – 400 mm, Motorradabhängig / Sleeve length 250 – 400 mm, depends on motorcycle
- Mantelmaterialien: Edelstahl, Titan / Sleeve materials: Stainless steel, Titanium
- Einlasskappe: Edelstahl / Inlet cap: Stainless steel
- Endkappe: Edelstahl / End cap: Stainless steel
- Gewicht / Weight: ab / from 1,28 kg



Model	Year	Ø mm	Description	Type	Muffler	Sleeve	Order no.	EUR excl. VAT	EUR incl. VAT
<b>BMW ENDURO</b>									
<b>G 650 GS</b>	11-		slip on (muffler with connecting tube) incl. cat., with carbon clamp	EG/ABE/EEC	ROXX	titanium	1599882 084511L	<b>606,00</b>	<b>727,20</b>
<b>G 650 GS Serato</b>	11-		slip on (muffler with connecting tube) no cat., with carbon clamp	SPORT	ROXX	titanium	0599882 084511L	<b>515,00</b>	<b>618,00</b>
<b>BMW STREETBIKES</b>									
<b>C 600 Sport</b>	12-15		slip on (muffler)	EG/ABE/EEC	HEXACONE	titanium	094882 084012	<b>546,00</b>	<b>655,20</b>
<b>C 650 GT</b>									
<b>C650 Sport</b>	16-	54	slip on (muffler with connecting tube)	EG/ABE/EEC	HEXACONE	stainless steel	054682 084516	<b>538,00</b>	<b>645,60</b>
<b>C650 GT</b>	16-			EG/ABE/EEC	HEXACONE	carbon	054482 084516	<b>613,00</b>	<b>735,60</b>
3C65, 44kW				EG/ABE/EEC	HEXACONE	titanium	054882 084516	<b>598,00</b>	<b>717,60</b>
				EG/ABE/EEC	BLACK HAWK	stainless steel black	0564782 084516	<b>557,00</b>	<b>668,40</b>
<b>F 650 GS</b>	08-12		slip on (muffler)	EG/ABE/EEC	HEXACONE	titanium	094882 085208	<b>552,00</b>	<b>662,40</b>
E8GS, 52 kW				EG/ABE/EEC	BLACK HAWK	stainless steel black	0964782 085208	<b>514,00</b>	<b>616,80</b>
<b>F 700 GS</b>	12-		"stainless steel header (2-1) no cat. instead of original header	Race (no EG/ABE/EEC)		Edelstahl	0101 085208	<b>445,00</b>	<b>534,00</b>
E8GS, 55 kW									
<b>F 800 GS</b>	08-		(nicht für F 800 GS Adventure)"	Race (no EG/ABE/EEC)		stainless steel			
E8GS, 63 kW									
<b>F 800 GS Triple Black</b>	12-								
<b>F 800 GS Adventure</b>	13-								
<b>F 800 S</b>	06-	54					154682 085206	<b>630,00</b>	<b>756,00</b>
<b>F 800 ST</b>			slip on (muffler with connecting tube) incl. cat.	EG/ABE/EEC	HEXACONE	stainless steel	154882 085206	<b>693,00</b>	<b>831,60</b>
E8ST, 62.5 kW				EG/ABE/EEC	HEXACONE	titanium	054682 085206	<b>522,00</b>	<b>626,40</b>
			slip on (muffler with connecting tube) no cat.	Race (no EG/ABE/EEC)	HEXACONE	stainless steel	054882 085206	<b>585,00</b>	<b>702,00</b>
<b>F 800 R</b>	09-		slip on (muffler)	Race (no EG/ABE/EEC)	HEXACONE	titanium	094682 085209	<b>492,00</b>	<b>590,40</b>
E8ST, 63 kW				EG/ABE/EEC	HEXACONE	stainless steel	094882 085209	<b>552,00</b>	<b>662,40</b>
<b>F 800 R</b>	15-			EG/ABE/EEC	HEXACONE	titanium	0964782 085209	<b>514,00</b>	<b>616,80</b>
E8ST, 66 kW				EG/ABE/EEC	BLACK HAWK	stainless steel black			
<b>F 800 GT</b>	13-								
<b>K 1 / K 100 RS 4-Vent.</b>	83-	76	complete system incl. cat., travelcase version	EG/ABE/EEC	INNOVATION	aluminium	012102 087589	<b>672,00</b>	<b>806,40</b>
BMW 100, 74 kW									
<b>K 1100 LT / RS 4-Vent.</b>	91-								
BMW 100, 74 kW									
<b>K 1200 RS</b>	97-	76	complete system (with pre muffler) no cat.				018802 088097L	<b>1054,00</b>	<b>1264,80</b>
<b>K 1200 GT</b>	02-			EG/ABE/EEC*	REVOLUTION	titanium			
BMW 589, 72 / 96 kW									
<b>K 1200 GT</b>	06-	60	slip on (muffler with connecting tube) incl. cat.	EG/ABE/EEC	HEXACONE	carbon	154482 088305	<b>725,00</b>	<b>870,00</b>
K12S, 112 kW				EG/ABE/EEC	HEXACONE	titanium	054482 088305	<b>617,00</b>	<b>740,40</b>
			slip on (muffler with connecting tube) no cat.	Race (no EG/ABE/EEC)	HEXACONE	carbon	054882 088305	<b>602,00</b>	<b>722,40</b>

BMW C 650 GT  
Black Hawk



BMW C 650 Sport  
Black Hawk



**SPORT = Silencer with homologation number (sound level is within the tolerated limit), but without catalytic converter, therefore no EEC!**

**1)** While stocks last! **\*)** EC-approval only for vehicles with a registration date before 1st July 2004. Specifications in the registration document have to match the actual conditions, i.e. the omission of the catalyser has to be reported to the licensing authority! A warranty of 24 months is given on all systems with EC-approval. No warranty on racing products. No warranty is given for small colour changes of the carbon!

**Technical changes and errors excepted!**

updates: [www.remus.eu](http://www.remus.eu)



Model	Year	Ø mm	Description	Type	Muffler	Sleeve	Order no.	EUR excl. VAT	EUR incl. VAT			
<b>BMW STREETBIKES</b>												
<b>K 1200 S / R</b> K12, 123 kW	05-	60	slip on (muffler with connecting tube) incl. cat.	EG/ABE/EEC	HEXACONE	carbon	154482 088305	<b>725,00</b>	<b>870,00</b>			
				EG/ABE/EEC	HEXACONE	titanium	154882 088305	<b>710,00</b>	<b>852,00</b>			
<b>K 1200 R Sport</b> K12R, 120 kW	07-		slip on (muffler with connecting tube) no cat.	Race (no EG/ABE/EEC)	HEXACONE	carbon	054482 088305	<b>617,00</b>	<b>740,40</b>			
				Race (no EG/ABE/EEC)	HEXACONE	titanium	054882 088305	<b>602,00</b>	<b>722,40</b>			
				<b>TITANIUM HIGH PERFORMANCE RACING SYSTEM</b> Titanium header (4-2-1) with conical tubes & complete GENESIS Ti. Racing muffler Not possible to fit in combination with a main stand			Race (no EG/ABE/EEC)	REVOLUTION	titanium	013803 088105	<b>2246,00</b>	<b>2695,20</b>
				<b>HIGH PERFORMANCE RACING SYSTEM</b> Stainless Steel header (4-2-1) with conical tubes & GENESIS Ti. Racing muffler Not possible to fit in combination with a main stand			Race (no EG/ABE/EEC)	REVOLUTION	titanium	013703 088105	<b>1521,00</b>	<b>1825,20</b>
<b>K 1300 R</b>	09-		slip on (muffler) incl. cat.	EG/ABE/EEC	HEXACONE	titanium	094852 088509	<b>760,00</b>	<b>912,00</b>			
<b>K 1300 S</b> 129 kW	09-		slip on (muffler) no cat.	Race (no EG/ABE/EEC)	HEXACONE	titanium	094883 088509	<b>648,00</b>	<b>777,60</b>			
			<b>high performance complete system</b> S/S header (4-2-1) conical tubes & full Ti. Race muffler (102 / 107dB(A))	Race (no EG/ABE/EEC)	HEXACONE	titanium	014883 088509	<b>1529,00</b>	<b>1834,80</b>			
<b>K 1300 GT</b> K12S, 118 kW	09-	60	slip on (muffler with connecting tube) incl. cat.	EG/ABE/EEC	HEXACONE	carbon	154482 088305	<b>725,00</b>	<b>870,00</b>			
				EG/ABE/EEC	HEXACONE	titanium	154882 088305	<b>710,00</b>	<b>852,00</b>			
			slip on (muffler with connecting tube) no cat.	Race (no EG/ABE/EEC)	HEXACONE	carbon	054482 088305	<b>617,00</b>	<b>740,40</b>			
				Race (no EG/ABE/EEC)	HEXACONE	titanium	054882 088305	<b>602,00</b>	<b>722,40</b>			
<b>K 1600 GT</b> <b>K 1600 GTL</b> 118 kW	11-	54	slip on left/right (muffler with connecting tube)	EG/ABE/EEC	HEXACONE	carbon	054482 089911LR	<b>1228,00</b>	<b>1473,60</b>			
				EG/ABE/EEC	HEXACONE	titanium	054882 089911LR	<b>1198,00</b>	<b>1437,60</b>			
			stainless steel header (6-2) no cat. instead of original header	EG/ABE/EEC	BLACK HAWK	stainless steel black	0564782 089911LR	<b>1108,00</b>	<b>1329,60</b>			
				Race (no EG/ABE/EEC)		stainless steel	0101 089911	<b>928,00</b>	<b>1113,60</b>			
<b>R 1100 R / GS / R 850 R</b> 52 / 59 kW	95-	76	slip on (muffler with connecting tube, without pre muffler) no cat.	EG/ABE/EEC*	REVOLUTION	titanium	078802 087095	<b>646,00</b>	<b>775,20</b>			
<b>R 1100 RS / RT</b> <b>R 850 RT</b> 52 / 59 kW	95-	76	slip on (muffler with connecting tube, without pre muffler) no cat.	EG/ABE/EEC*	REVOLUTION	aluminium	078102 087595	<b>524,00</b>	<b>628,80</b>			
				EG/ABE/EEC*	REVOLUTION	titanium	078802 087595	<b>646,00</b>	<b>775,20</b>			
<b>R 850 GS</b>	99-		slip on (muffler)	EG/ABE/EEC	REVOLUTION	Aluminium	008102 087799	<b>377,00</b>	<b>452,40</b>			
<b>R 1150 GS</b>				EG/ABE/EEC	REVOLUTION	carbon	008402 087799	<b>496,00</b>	<b>595,20</b>			
<b>R 1150 R</b>				EG/ABE/EEC	REVOLUTION	titanium	008802 087799	<b>496,00</b>	<b>595,20</b>			
<b>R 1150 R Rockster</b> R21, 62 kW	03-		slip on (muffler with connecting tube, without pre muffler) no cat.	EG/ABE/EEC*	REVOLUTION	aluminium	078102 087799	<b>679,00</b>	<b>814,80</b>			
<b>R 1200 GS</b>	04-09	54	slip on (muffler with connecting tube)	EG/ABE/EEC	HEXACONE	stainless steel	054682 088104L	<b>552,00</b>	<b>662,40</b>			
<b>R 1200 GS Adventure</b> R12, 74 kW	06-09			EG/ABE/EEC	HEXACONE	carbon	054482 088104L	<b>630,00</b>	<b>756,00</b>			
				EG/ABE/EEC	HEXACONE	titanium	054882 088104L	<b>615,00</b>	<b>738,00</b>			
<b>R 1200 GS</b>	08-09			complete system no cat.	Race (no EG/ABE/EEC)	HEXACONE	stainless steel	014682 088104L	<b>1071,00</b>	<b>1285,20</b>		
<b>R 1200 GS Adventure</b> R12, 77 kW	08-09			Race (no EG/ABE/EEC)	HEXACONE	carbon	014482 088104L	<b>1149,00</b>	<b>1378,80</b>			
				Race (no EG/ABE/EEC)	HEXACONE	titanium	014882 088104L	<b>1134,00</b>	<b>1360,80</b>			

BMW F 800 GS  
Black Hawk



BMW K 1600 GT  
Black Hawk



**SPORT** = Silencer with homologation number (sound level is within the tolerated limit), but without catalytic converter, therefore no EEC!  
 \*1) While stocks last! \*2) EC-approval only for vehicles with a registration date before 1st July 2004. Specifications in the registration document have to match the actual conditions, i.e. the omission of the catalyser has to be reported to the licensing authority! A warranty of 24 months is given on all systems with EC-approval. No warranty on racing products. No warranty is given for small colour changes of the carbon!  
 Technical changes and errors excepted!

updates: [www.remus.eu](http://www.remus.eu)



Model	Year	Ø mm	Description	Type	Muffler	Sleeve	Order no.	EUR excl. VAT	EUR incl. VAT	
<b>BMW STREETBIKES</b>										
<b>R 1200 GS</b>	10-12	60	slip on (muffler with connecting tube)	EG/ABE/EEC	HEXACONE	carbon	054482 088010L	<b>616,00</b>	<b>739,20</b>	
<b>R 1200 GS Adventure</b>				EG/ABE/EEC	HEXACONE	titanium	054882 088010L	<b>601,00</b>	<b>721,20</b>	
R12, 81 kW			complete system no cat.		Race (no EG/ABE/EEC)	HEXACONE	carbon	014482 088010L	<b>1135,00</b>	<b>1362,00</b>
					Race (no EG/ABE/EEC)	HEXACONE	titanium	014882 088010L	<b>1120,00</b>	<b>1344,00</b>
<b>R 1200 GS</b>	13-	60	slip on (muffler) incl. CARBON heat protecting shield	EG/ABE/EEC	HEXACONE	stainless steel	094682 088013	<b>613,00</b>	<b>735,60</b>	
92 kW	EG/ABE/EEC			HEXACONE	carbon	094482 088013	<b>689,00</b>	<b>826,80</b>		
<b>R 1200 GS Adventure</b>	14-		EG/ABE/EEC	HEXACONE	titanium	094882 088013	<b>673,00</b>	<b>807,60</b>		
			EG/ABE/EEC	BLACK HAWK	stainless steel black	0964782 088013	<b>641,00</b>	<b>769,20</b>		
		stainless steel header (2-1) no cat. instead of original header		Race (no EG/ABE/EEC)		stainless steel	0101 088115	<b>485,00</b>	<b>582,00</b>	
<b>R 1200 GS</b>	16-	60	slip on (muffler) incl. CARBON heat protecting shield	EG/ABE/EEC	HEXACONE	stainless steel	094682 088016	<b>613,00</b>	<b>735,60</b>	
92 kW, 1G12 (Euro 4)				EG/ABE/EEC	HEXACONE	carbon	094482 088016	<b>689,00</b>	<b>826,80</b>	
<b>R 1200 GS Adventure</b>	16-		EG/ABE/EEC	HEXACONE	titanium	094882 088016	<b>673,00</b>	<b>807,60</b>		
			EG/ABE/EEC	BLACK HAWK	stainless steel black	0964782 088016	<b>641,00</b>	<b>769,20</b>		
			EG/ABE/EEC	REMUS 8	stainless steel mat	0584682 088016	<b>719,00</b>	<b>862,80</b>		
			EG/ABE/EEC	REMUS 8	stainless steel black	0584782 088016	<b>749,00</b>	<b>898,80</b>		
		stainless steel header (2-1) no cat. instead of original header		Race (no EG/ABE/EEC)	HYPERCONE	stainless steel	0101 088115	<b>485,00</b>	<b>582,00</b>	
<b>R 1200 ST / RT</b>	05-	54	slip on (muffler with connecting tube)	EG/ABE/EEC	HEXACONE	stainless steel	054682 088005L	<b>522,00</b>	<b>626,40</b>	
R1ST, 81 kW				EG/ABE/EEC	HEXACONE	carbon	054482 088005L	<b>600,00</b>	<b>720,00</b>	
				EG/ABE/EEC	HEXACONE	titanium	054882 088005L	<b>585,00</b>	<b>702,00</b>	
			complete system no cat.		Race (no EG/ABE/EEC)	HEXACONE	stainless steel	014682 088005L	<b>1041,00</b>	<b>1249,20</b>
Race (no EG/ABE/EEC)					HEXACONE	carbon	014482 088005L	<b>1119,00</b>	<b>1342,80</b>	
Race (no EG/ABE/EEC)					HEXACONE	titanium	014882 088005L	<b>1104,00</b>	<b>1324,80</b>	
<b>R 1200 R</b>	06-	54	slip on (muffler with connecting tube)	EG/ABE/EEC	HEXACONE	stainless steel	054682 088206L	<b>522,00</b>	<b>626,40</b>	
R1ST, 80 kW				EG/ABE/EEC	HEXACONE	titanium	054882 088206L	<b>585,00</b>	<b>702,00</b>	
<b>R 1200 R</b>	11-	60	slip on (muffler with connecting tube)	EG/ABE/EEC	HEXACONE	stainless steel	054682 088011L	<b>522,00</b>	<b>626,40</b>	
80 kW				EG/ABE/EEC	HEXACONE	titanium	054882 088011L	<b>585,00</b>	<b>702,00</b>	
<b>R 1200 RS</b>	15-	66	slip on (muffler inkl. connecting tube) incl. CARBON heat protecting shield	EG/ABE/EEC	HEXACONE	stainless steel	054682 088115	<b>659,00</b>	<b>790,80</b>	
<b>R 1200 R</b>				EG/ABE/EEC	HEXACONE	carbon	054482 088115	<b>738,00</b>	<b>885,60</b>	
				EG/ABE/EEC	HEXACONE	titanium	054882 088115	<b>723,00</b>	<b>867,60</b>	
				EG/ABE/EEC	BLACK HAWK	stainless steel black	0564782 088115	<b>678,00</b>	<b>813,60</b>	
					stainless steel header (2-1) no cat. instead of original header		Race (no EG/ABE/EEC)		stainless steel	0101 088115
<b>R 1200 RT</b>	10-13	60	slip on (muffler with connecting tube)	EG/ABE/EEC	HEXACONE	carbon	054482 088110L	<b>600,00</b>	<b>720,00</b>	
R12T, 81 kW				EG/ABE/EEC	HEXACONE	titanium	054882 088110L	<b>585,00</b>	<b>702,00</b>	
			complete system no cat.		Race (no EG/ABE/EEC)	HEXACONE	carbon	014482 088110L	<b>1119,00</b>	<b>1342,80</b>
Race (no EG/ABE/EEC)					HEXACONE	titanium	014882 088110L	<b>1104,00</b>	<b>1324,80</b>	
<b>R 1200 RT</b>	14-	66	slip on (muffler inkl. connecting tube) incl. CARBON heat protecting shield	EG/ABE/EEC	HEXACONE	stainless steel	054682 088014	<b>659,00</b>	<b>790,80</b>	
				EG/ABE/EEC	HEXACONE	carbon	054482 088014	<b>738,00</b>	<b>885,60</b>	
				EG/ABE/EEC	HEXACONE	titanium	054882 088014	<b>723,00</b>	<b>867,60</b>	
				EG/ABE/EEC	BLACK HAWK	stainless steel black	0564782 088014	<b>678,00</b>	<b>813,60</b>	
					stainless steel header (2-1) no cat. instead of original header		Race (no EG/ABE/EEC)		stainless steel	0101 088115

BMW R 1200 R  
Black Hawk



BMW R 1200 RT  
HexaCone



BMW R 1200 GS Adventure  
Black Hawk



SPORT = Silencer with homologation number (sound level is within the tolerated limit), but without catalytic converter, therefore no EEC!

1) While stocks last! \*) EC-approval only for vehicles with a registration date before 1st July 2004. Specifications in the registration document have to match the actual conditions, i.e. the omission of the catalyser has to be reported to the licensing authority! A warranty of 24 months is given on all systems with EC-approval. No warranty on racing products. No warranty is given for small colour changes of the carbon!

Technical changes and errors excepted!

updates: [www.remus.eu](http://www.remus.eu)



Model	Year	Ø mm	Description	Type	Muffler	Sleeve	Order no.	EUR excl. VAT	EUR incl. VAT
<b>BMW STREETBIKES</b>									
<b>S 1000 RR</b> K46, 143 kW	09-		slip on (muffler) incl. heat protecting shield	EG/ABE/EEC	HYPERCONE	stainless steel	096602 087009	432,00	518,40
				EG/ABE/EEC	HYPERCONE	titanium	096802 087009	536,00	643,20
<b>S 1000 R</b> K10, 118 kW	14-		high performance complete system - full titanium optional muffler bracket black (rear footrest must be removed)	Race (no EG/ABE/EEC)	HEXACONE	titanium	014883 087009T	1918,00	2301,60
							HA087009	94,00	112,80
<b>S 1000 RR</b> K10, 146 kW	15-	60	slip on (muffler with connecting tube) optional muffler bracket black for slip on versions (rear footrest must be removed) high performance complete system - full titanium optional muffler bracket black for complete system (rear footrest must be removed)	EG/ABE/EEC	HYPERCONE	stainless steel	056602 087015	463,00	555,60
				EG/ABE/EEC	HYPERCONE	stainless steel black	056702 087015	507,00	608,40
				EG/ABE/EEC	HYPERCONE	titanium	056802 087015	566,00	679,20
							HA087015	113,00	135,60
				Race (no EG/ABE/EEC)	HEXACONE	titanium	014883 087015T	1918,00	2301,60
			HA087009	94,00	112,80				
<b>S 1000 XR</b> K10, 110 kW	15-		slip on (muffler) with carbon heat protection shield	EG/ABE/EEC	HEXACONE	stainless steel	094682 087115	733,00	879,60
				EG/ABE/EEC	HEXACONE	carbon	094482 087115	807,00	968,40
				EG/ABE/EEC	HEXACONE	titanium	094882 087115	792,00	950,40
<b>R nineT</b> R1ST, 81 kW	14-	60	slip on (muffler with connecting tube) stainless steel connecting tube upswept stainless-steel heat shield for upswept exhaust system stainless steel header (2-1) no cat. instead of original header flap replacement tube	EG/ABE/EEC	HYPERCONE	stainless steel	056602 087514L	463,00	555,60
				EG/ABE/EEC	HYPERCONE	stainless steel black	056702 087514L	507,00	608,40
				EG/ABE/EEC	HYPERCONE	titanium	056802 087514L	566,00	679,20
							0108 087514	175,00	210,00
				EG/ABE/EEC			087514HBL	48,00	57,60
				SPORT (no EG/ABE/EEC)	HYPERCONE	stainless steel	0101 087514	516,00	619,20
							087514KER	38,00	45,60

<b>BUELL</b>									
<b>XB-12R Firebolt</b> XB1, 74.6 kW	04-		slip on left/right (muffler)	EG/ABE/EEC	2x Ø94mm rund	stainless steel polished	092782 098004LR	925,00	1110,00
				EG/ABE/EEC	2x Ø94mm rund	stainless steel matt	092782 098004LRM	925,00	1110,00
<b>XB-12Ss Lightning</b> XB2, 74.6 kW	05-								
<b>XB-9SX Lightning</b> XB1, 60 kW	08-		slip on left/right (muffler)	EG/ABE/EEC	2x Ø 90 mm rund	stainless steel black	092782 098008LRB	951,00	1141,20
			Stainless steel belt cover for XB2 models		Abdeckung/cover	stainless steel black	098008B	23,00	27,60
<b>XB-12S Lightning</b>	08-								
<b>XB-12Scg Lightning</b>	08-								
<b>XB-1, 70 kW</b>									
<b>XB-12XT</b>									
<b>XB-12X</b>									
<b>XB-12Ss Lightning</b>	08-								
<b>XB-12STT Lightning</b>	08-								
<b>XB2, 70 kW</b>									

BMW S1000RR  
HyperCone



BMW R nine T  
HyperCone



SPORT = Silencer with homologation number (sound level is within the tolerated limit), but without catalytic converter, therefore no EEC!  
 1) While stocks last! 2) EC-approval only for vehicles with a registration date before 1st July 2004. Specifications in the registration document have to match the actual conditions, i.e. the omission of the catalyser has to be reported to the licensing authority! A warranty of 24 months is given on all systems with EC-approval. No warranty on racing products. No warranty is given for small colour changes of the carbon!  
 Technical changes and errors excepted!

updates: [www.remus.eu](http://www.remus.eu)



Kompletanlage / complete system



screw on



slip on

Model	Year	Ø mm	Description	Type	Muffler	Sleeve	Order no.	EUR excl. VAT	EUR incl. VAT			
<b>DUCATI</b>												
Ducati Monster 821	15-	65	slip on (muffler with connecting tube)	EG/ABE/EEC	HYPERCONE	stainless steel	056682 155315	488,00	585,60			
Ducati Monster 821 Stripe	15-	(only incl. catalytic converter street-legal)	HYPERCONE		stainless steel black	056782 155315	533,00	639,60				
			HYPERCONE		titanium	056882 155315	591,00	709,20				
		catalytic converter				KAT016	148,00	177,60				
<b>The exhaust system has an EEC approval, but is only authorised for road use in combination with the catalytic converter.</b>												
Monster 1100 EVO 70 kW	11-	60	slip on (muffler with connecting tube) no cat.	SPORT	HYPERCONE	stainless steel	056682 157111	473,00	567,60			
				SPORT	HYPERCONE	stainless steel black	056782 157111	518,00	621,60			
				SPORT	HYPERCONE	titanium	056882 157111M	576,00	691,20			
Monster 1200 R (Euro 4)	16-	65	slip on (muffler with connecting tube) (only incl. catalytic converter street-legal)	EG/ABE/EEC	HYPERCONE	stainless steel	056682 158016	460,00	552,00			
					HYPERCONE	stainless steel black	056782 158016	488,00	585,60			
					HYPERCONE	titanium	056882 158016	558,00	669,60			
		catalytic converter (Euro 4)					KAT018	191,00	229,20			
<b>The exhaust system has an EEC approval, but is only authorised for road use in combination with the catalytic converter.</b>												
Monster 1200	14-	65	slip on (muffler with connecting tube)	EG/ABE/EEC	HYPERCONE	stainless steel	056682 158114	488,00	585,60			
Monster 1200 S	14-	(only incl. catalytic converter street-legal)	HYPERCONE		stainless steel black	056782 158114	533,00	639,60				
			HYPERCONE		titanium	056882 158114	591,00	709,20				
		catalytic converter					KAT016	148,00	177,60			
<b>The exhaust system has an EEC approval, but is only authorised for road use in combination with the catalytic converter.</b>												
Streetfighter 848	11-	65	slip on (muffler incl. connecting tube)	RACE	HEXACONE	titanium	054883 155512	691,00	829,20			
Streetfighter S	09-											
Hypermotard 939	16-	65	slip on (muffler with connecting tube) (only incl. catalytic converter street-legal)	EG/ABE/EEC	BLACK HAWK	stainless steel black	0564782 156516	552,00	662,40			
Hypermotard 939 SP (Euro 4)								KAT018	191,00	229,20		
<b>The exhaust system has an EEC approval, but is only authorised for road use in combination with the catalytic converter.</b>												
					slip on (muffler with connecting tube)	Race (no EG/ABE/EEC)	HYPERCONE	stainless steel	056683 156516	488,00	585,60	
			Race (no EG/ABE/EEC)	HYPERCONE	stainless steel black	056783 156516	533,00	639,60				
			Race (no EG/ABE/EEC)	HYPERCONE	titanium	056883 156516	591,00	709,20				
Hypermotard 1100	07-		slip on left/right (muffler with connecting tube)	EG/ABE/EEC	HEXACONE	carbon	054482 157107LR	1180,00	1416,00			
Hypermotard 1100S B1, 62 kW	07-		complete system left/right no cat.	Race (no EG/ABE/EEC)	HEXACONE	carbon	014482 157107LR	1752,00	2102,40			
Hypermotard 1100 EVO SP B1, 69.9 kW	10-		not suitable for Hypermotard 796									
Hypermotard 796 B1, 59.6 kW	10-											
Hypermotard ABS	13-		slip on (muffler)	Race (no EG/ABE/EEC)	HYPERCONE	stainless steel	096683 155513	455,00	546,00			
Hypermotard SP ABS				Race (no EG/ABE/EEC)	HYPERCONE	stainless steel black	096783 155513	504,00	604,80			
Hyperstrada ABS B2, 81 kW												

Ducati Monster 1200R  
HyperCone

**EURO 4**



Ducati Hypermotard 939  
Black Hawk

**EURO 4**



**SPORT = Silencer with homologation number (sound level is within the tolerated limit), but without catalytic converter, therefore no EEC!**

**1)** While stocks last! **\*)** EC-approval only for vehicles with a registration date before 1st July 2004. Specifications in the registration document have to match the actual conditions, i.e. the omission of the catalyser has to be reported to the licensing authority! A warranty of 24 months is given on all systems with EC-approval. No warranty on racing products. No warranty is given for small colour changes of the carbon!

**Technical changes and errors excepted!**

updates: [www.remus.eu](http://www.remus.eu)



Model	Year	Ø mm	Description	Type	Muffler	Sleeve	Order no.	EUR excl. VAT	EUR incl. VAT
<b>DUCATI</b>									
<b>Multistrada 1200</b>	10-		slip on (muffler) with carbon heat protecting shield	EG/ABE/EEC	HYPERCONE	titanium	096802 158012	634,00	760,80
<b>Multistrada 1200 S</b> 110 kW	10-								
<b>Multistrada 1200</b>	15-		slip on (muffler) with carbon heat protecting shield	EG/ABE/EEC	HYPERCONE	stainless steel black	096702 158015	578,00	693,60
<b>Multistrada 1200 Sport</b>			slip on (muffler) with carbon heat protecting shield	EG/ABE/EEC	HYPERCONE	titanium	096802 158015	634,00	760,80
<b>Diavel</b> 119 kW	11-	65	slip on (muffler with connecting tube) (only incl. catalytic converter street-legal) incl. heat protecting shield black painted catalytic converter		HYPERCONE	stainless steel	056682 158111	545,00	654,00
				EG/ABE/EEC	HYPERCONE	stainless steel black	056782 158111	590,00	708,00
					HYPERCONE	titanium	056882 158111	648,00	777,60
							KAT016	148,00	177,60
<b>The exhaust system has an EEC approval, but is only authorised for road use in combination with the catalytic converter.</b>									
<b>Ducati Scrambler Icon</b>	15-		slip on (muffler with front silencer) (only incl. catalytic converter street-legal)		HYPERCONE	stainless steel	406682 155215	598,00	717,60
<b>Ducati Scrambler Full Throttle</b>	15-		(only incl. catalytic converter street-legal)		HYPERCONE	stainless steel black	406782 155215	643,00	771,60
<b>Ducati Scrambler Urban Enduro</b>	15-				HYPERCONE	titanium	406882 155215	701,00	841,20
<b>Ducati Scrambler Classic</b>	15-		catalytic converter	EG/ABE/EEC			KAT016	148,00	177,60
<b>The exhaust system has an EEC approval, but is only authorised for road use in combination with the catalytic converter.</b>									
			slip on (muffler with connecting tube)	Race (no EG/ABE/EEC)	HYPERCONE	stainless steel	036682 155215	488,00	585,60
				Race (no EG/ABE/EEC)	HYPERCONE	stainless steel black	036782 155215	533,00	639,60
				Race (no EG/ABE/EEC)	HYPERCONE	titanium	036882 155215	591,00	709,20
<b>Scrambler Sixty2</b> (Euro 4)	16-	65	slip on (muffler with front silencer) (only incl. catalytic converter street-legal) (only incl. catalytic converter street-legal)		HYPERCONE	stainless steel	406682 152016	576,00	691,20
					HYPERCONE	stainless steel black	406782 152016	604,00	724,80
					HYPERCONE	titanium	406882 152016	674,00	808,80
			catalytic converter (Euro 4)	EG/ABE/EEC			KAT018	191,00	229,20
<b>The exhaust system has an EEC approval, but is only authorised for road use in combination with the catalytic converter.</b>									

Ducati Multistrada 1200 HyperCone



Ducati Diavel HyperCone



Ducati Scrambler HyperCone



Ducati Scrambler Sixty2 HyperCone



**SPORT = Silencer with homologation number (sound level is within the tolerated limit), but without catalytic converter, therefore no EEC!**  
 1) While stocks last! 2) EC-approval only for vehicles with a registration date before 1st July 2004. Specifications in the registration document have to match the actual conditions, i.e. the omission of the catalyser has to be reported to the licensing authority! A warranty of 24 months is given on all systems with EC-approval. No warranty on racing products. No warranty is given for small colour changes of the carbon!  
**Technical changes and errors excepted!**

updates: [www.remus.eu](http://www.remus.eu)



Kompletanlage / complete system



screw on



slip on

Model	Year	Ø mm	Description	Type	Muffler	Sleeve	Order no.	EUR excl. VAT	EUR incl. VAT
<b>HONDA ENDURO</b>									
<b>CRF 250 R</b>	10-	54	complete system	Race (no EG/ABE/EEC)	ROXX	titanium	0199883 251510	<b>647,00</b>	<b>776,40</b>
<b>XL 650 V Transalp</b> RD10 / RD11, 39 kW	01-04	54	slip on (muffler with connecting tube) not for sidecase version	EG/ABE/EEC	REVOLUTION GP	aluminium	253182 254501	<b>438,00</b>	<b>525,60</b>
<b>XL 650 V Transalp</b> RD11, 39 kW	05-								
<b>XRV 750 Afrika Twin</b> RD07-C, 35 / 37 kW	96-03-	54	slip on (muffler with connecting tube)	EG/ABE/EEC	REVOLUTION GP	aluminium	053182 255003	<b>436,00</b>	<b>523,20</b>
<b>CRF1000L Africa Twin</b>	16-		slip on (muffler)	EG/ABE/EEC	OKAMI	stainless steel	0914682 257016	<b>334,00</b>	<b>400,80</b>
				EG/ABE/EEC	OKAMI	Carbon	0914482 257016	<b>420,00</b>	<b>504,00</b>
				EG/ABE/EEC	OKAMI	titanium	0914882 257016	<b>382,00</b>	<b>458,40</b>
				EG/ABE/EEC	OKAMI	stainless steel black	0914782 257016	<b>364,00</b>	<b>436,80</b>
		sound insert with spark arrestor	Race (no EG/ABE/EEC)			DBM233RV	<b>43,00</b>	<b>51,60</b>	
		header 2-1 incl. black heat shield, fits to REMUS or original muffler (only incl. catalytic converter street-legal)					stainless steel	0101 257016	<b>461,00</b>
catalytic converter				EG/ABE/EEC			KAT017	<b>148,00</b>	<b>177,60</b>
<b>HONDA STREETBIKES</b>									
<b>CB 1100</b> 66 kW	13-		slip on (muffler with connecting tube)	EG/ABE/EEC	POWERCONE	stainless steel	055682 257513	<b>469,00</b>	<b>562,80</b>
				EG/ABE/EEC	POWERCONE	stainless steel black	055782 257513	<b>498,00</b>	<b>597,60</b>
				EG/ABE/EEC	POWERCONE	titanium	055882 257513	<b>568,00</b>	<b>681,60</b>
<b>CBF 1000 F</b> SC64, 72 / 79 kW	10-	54	slip on (muffler with connecting tube) no cat.	Race (no EG/ABE/EEC)	OKAMI	stainless steel	0514682 257010	<b>392,00</b>	<b>470,40</b>
			slip on (muffler with connecting tube) incl. cat.	EG/ABE/EEC	OKAMI	stainless steel	1514682 257010	<b>500,00</b>	<b>600,00</b>
<b>CBR 250 R</b> 19.4 kW	11-	54	complete system	Race (no EG/ABE/EEC)	OKAMI	titanium	0114883 251511	<b>602,00</b>	<b>722,40</b>
		54	slip on (muffler with connecting tube) no cat.	Race (no EG/ABE/EEC)	OKAMI	titanium	0314883 251511	<b>441,00</b>	<b>529,20</b>
<b>CBR 600 F</b> PC41, 75 kW	11-		slip on (muffler with connecting tube)	EG/ABE/EEC	HYPERCONE	stainless steel	056602 254011	<b>435,00</b>	<b>522,00</b>
<b>CBR 600 RR</b> PC40C, 88.1 kW	09-	60	slip on (muffler with connecting tube)	EG/ABE/EEC	REVOLUTION	aluminium	058102 254009	<b>509,00</b>	<b>610,80</b>
	<b>CBR 600 RR C-ABS</b> PC40, 88.1 kW								
<b>CBR 600 RR</b> 88 kW	13-		slip on (muffler with connection tube)	EG/ABE/EEC	OKAMI	stainless steel	0599682 254013	<b>508,00</b>	<b>609,60</b>
<b>CBR 1100 XX</b> SC35, 112 kW <b>X-Eleven</b> SC42, 100 kW	99-	54	slip on left/right (muffler with connecting tube) no cat.	EG/ABE/EEC*	REVOLUTION GP	aluminium	053182 257899LR	<b>872,00</b>	<b>1046,40</b>

Honda CRF 250 R  
RoxX



Honda CRF 1000L Africa Twin  
Okami



**SPORT** = Silencer with homologation number (sound level is within the tolerated limit), but without catalytic converter, therefore no EEC!

**1)** While stocks last! **\*)** EC-approval only for vehicles with a registration date before 1st July 2004. Specifications in the registration document have to match the actual conditions, i.e. the omission of the catalyser has to be reported to the licensing authority! A warranty of 24 months is given on all systems with EC-approval. No warranty on racing products. No warranty is given for small colour changes of the carbon!

Technical changes and errors excepted!

updates: [www.remus.eu](http://www.remus.eu)



Model	Year	Ø mm	Description	Type	Muffler	Sleeve	Order no.	EUR excl. VAT	EUR incl. VAT
<b>HONDA STREETBIKES</b>									
<b>CBR 1000 RR</b> SC59A, 131 kW	08-14	54	slip on (muffler with connecting tube incl. cat)	EG/ABE/EEC	HYPERCONE	stainless steel	156682 257108	<b>783,00</b>	<b>939,60</b>
				EG/ABE/EEC	HYPERCONE	stainless steel black	156782 257108	<b>828,00</b>	<b>993,60</b>
				EG/ABE/EEC	HYPERCONE	titanium	156882 257108	<b>886,00</b>	<b>1063,20</b>
			slip on (muffler with connecting tube no cat)	Sport (no EG/ABE/EEC)	HYPERCONE	stainless steel	056682 257108	<b>678,00</b>	<b>813,60</b>
				Sport (no EG/ABE/EEC)	HYPERCONE	stainless steel black	056782 257108	<b>723,00</b>	<b>867,60</b>
				Sport (no EG/ABE/EEC)	HYPERCONE	titanium	056882 257108	<b>781,00</b>	<b>937,20</b>
				„high performance complete system - full titanium When using the serial fairing you have to recut it! optional muffler bracket black (rear footrest must be removed)	Race (no EG/ABE/EEC)	HEXACONE	titanium	014883 257014T	<b>1919,00</b>
				HA087009	<b>94,00</b>	<b>112,80</b>			
<b>NC 700 X/S</b> <b>NC 750 X/S</b>	12-14	54	slip on (muffler with connecting tube)	EG/ABE/EEC	OKAMI	stainless steel	0514682 254512	<b>392,00</b>	<b>470,40</b>
				EG/ABE/EEC	OKAMI	carbon	0514482 254512	<b>479,00</b>	<b>574,80</b>
				EG/ABE/EEC	OKAMI	titanium	0514882 254512	<b>441,00</b>	<b>529,20</b>
<b>VFR 800 XA Crossrunner</b>	12-14	54	slip on (muffler with connecting tube)	EG/ABE/EEC	OKAMI	stainless steel	0514682 255212	<b>400,00</b>	<b>480,00</b>
				EG/ABE/EEC	OKAMI	carbon	0514482 255212	<b>487,00</b>	<b>584,40</b>
				EG/ABE/EEC	OKAMI	titanium	0514882 255212	<b>449,00</b>	<b>538,80</b>
<b>VFR 800 F</b> RC79, 78 kW	14-	54	slip on (muffler with connecting tube).	EG/ABE/EEC	OKAMI	stainless steel	0514682 255214	<b>400,00</b>	<b>480,00</b>
				EG/ABE/EEC	OKAMI	carbon	0514482 255214	<b>487,00</b>	<b>584,40</b>
				EG/ABE/EEC	OKAMI	titanium	0514882 255214	<b>449,00</b>	<b>538,80</b>
<b>VFR 800 X Crossrunner</b>	15-			EG/ABE/EEC	OKAMI	titanium	0514882 255214	<b>449,00</b>	<b>538,80</b>

Honda CRF 1000L Africa Twin  
Okami + Krümmer/header



Honda - CBR 600 F  
HyperCone



Honda - CBR 1000 RR  
HyperCone



Honda VFR 800 XA Crossrunner  
Okami



Honda VFR 800 F  
Okami



**SPORT** = Silencer with homologation number (sound level is within the tolerated limit), but without catalytic converter, therefore no EEC!

**1)** While stocks last! **\*)** EC-approval only for vehicles with a registration date before 1st July 2004. Specifications in the registration document have to match the actual conditions, i.e. the omission of the catalyser has to be reported to the licensing authority! A warranty of 24 months is given on all systems with EC-approval. No warranty on racing products. No warranty is given for small colour changes of the carbon!

Technical changes and errors excepted!

updates: [www.remus.eu](http://www.remus.eu)



# REMUS STREETBIKES

Model	Year	Ø mm	Description	Type	Muffler	Sleeve	Order no.	EUR excl. VAT	EUR incl. VAT
<b>HUSQVARNA</b>									
Nuda 900/900R 77 kW	12-		slip on (muffler) with heat protecting shield	EG/ABE/EEC	HYPERCONE	stainless steel	096682 326012	457,00	548,40
				EG/ABE/EEC	HYPERCONE	stainless steel black	096782 326012	506,00	607,20
701 Supermoto	16-		slip on (muffler with connecting tube)	RACE	HEXACONE	stainless steel	054683 325016	558,00	669,60
				RACE	HEXACONE	titanium	054883 325016	621,00	745,20

Husquarna Nuda 900  
HyperCone



Husquarna 701 Supermoto  
HyperCone



## KAWASAKI STREETBIKES

ER-6N 53 kW	12		complete system no cat.	RACE	HYPERCONE	stainless steel black	016783 364512	777,00	932,40
				RACE	HYPERCONE	titanium	016883 364512	795,00	954,00
GTR 1400 ZGT40A, 114 kW	07-	60	slip on (muffler with connecting tube)	EG/ABE/EEC	HEXACONE	carbon	054482 369007	664,00	796,80
	10-			EG/ABE/EEC	HEXACONE	titanium	054882 369007	649,00	778,80
				EG/ABE/EEC	OKAMI	carbon	0514482 369007	543,00	651,60
				EG/ABE/EEC	OKAMI	titanium	0514882 369007	505,00	606,00
Z 800 83 kW	13-	54	slip on (muffler with connecting tube) incl. control flap	EG/ABE/EEC	OKAMI	stainless steel	0514682 365312	472,00	566,40
				EG/ABE/EEC	OKAMI	Carbon	0514482 365312	559,00	670,80
				EG/ABE/EEC	OKAMI	titanium	0514882 365312	521,00	625,20
Z 800 e 70 kW (35 kW)	13-	54	slip on (muffler with connecting tube)	EG/ABE/EEC	OKAMI	stainless steel	0514682 365412	392,00	470,40
				EG/ABE/EEC	OKAMI	Carbon	0514482 365412	479,00	574,80
				EG/ABE/EEC	OKAMI	titanium	0514882 365412	441,00	529,20

Kawasaki ER-6N  
HyperCone



Kawasaki Z 800  
Okami



**SPORT = Silencer with homologation number (sound level is within the tolerated limit), but without catalytic converter, therefore no EEC!**

**1)** While stocks last! **\*)** EC-approval only for vehicles with a registration date before 1st July 2004. Specifications in the registration document have to match the actual conditions, i.e. the omission of the catalyser has to be reported to the licensing authority! A warranty of 24 months is given on all systems with EC-approval. No warranty on racing products. No warranty is given for small colour changes of the carbon!

**Technical changes and errors excepted!**



Model	Year	Ø mm	Description	Type	Muffler	Sleeve	Order no.	EUR excl. VAT	EUR incl. VAT
<b>KAWASAKI STREETBIKES</b>									
<b>Z 800</b> 83 kW	13-	54	slip on (muffler with connecting tube)	RACE (no EG/ABE/EEC)	OKAMI	stainless steel	0514683 365212	<b>392,00</b>	<b>470,40</b>
				RACE (no EG/ABE/EEC)	OKAMI	Carbon	0514483 365212	<b>479,00</b>	<b>574,80</b>
				RACE (no EG/ABE/EEC)	OKAMI	titanium	0514883 365212	<b>441,00</b>	<b>529,20</b>
<b>Z 1000</b> ZRT00, 92 kW	09-	54	slip on left/right (muffler with connecting tube) no cat.	Race (no EG/ABE/EEC)	HEXACONE	titanium	054882 367009LR	<b>1170,00</b>	<b>1404,00</b>
<b>Z 1000 SX</b> 104.5 kW	14-		slip on left/right (muffler)	EG/ABE/EEC	HYPERCONE	stainless steel	096682 367014LR	<b>890,00</b>	<b>1068,00</b>
				EG/ABE/EEC	HYPERCONE	stainless steel black	096782 367014LR	<b>986,00</b>	<b>1183,20</b>
				EG/ABE/EEC	HYPERCONE	titanium	096882 367014LR	<b>1010,00</b>	<b>1212,00</b>
<b>Ninja 300</b> 29 kW	12-		slip on (muffler with connecting tube) no cat.	Race (no EG/EEC)	OKAMI	carbon	0514483 361812	<b>479,00</b>	<b>574,80</b>
<b>ZX-6R Ninja</b> ZX600RR, 94.1 kW	09-	54	slip on (muffler with connecting tube) fits on serial pre muffler	EG/ABE/EEC	OKAMI	stainless steel	0514682 364009	<b>392,00</b>	<b>470,40</b>
<b>ZX-10R</b> ZXT00E, 138.3 kW	08-	54	<b>high performance complete system</b> stainless steel header (4-2-1) with conical tubes & full Titanium Race muffler, 107dB(A)	Race (no EG/ABE/EEC)	GRAND PRIX	titanium	013903 367008	<b>1230,00</b>	<b>1476,00</b>
<b>ZX-10R</b> 147.1 kW	11-	54	slip on (muffler with connecting tube)	EG/ABE/EEC	OKAMI	carbon	0514482 367011	<b>479,00</b>	<b>574,80</b>
				Race (no EG/ABE/EEC)	HYPERCONE	stainless steel	036682 367011	<b>486,00</b>	<b>583,20</b>
				Race (no EG/ABE/EEC)	HYPERCONE	stainless steel black	036782 367011	<b>531,00</b>	<b>637,20</b>
				Race (no EG/ABE/EEC)	HYPERCONE	titanium	036882 367011	<b>589,00</b>	<b>706,80</b>

Kawasaki Z 1000 HyperCone



KTM 125 Duke RSC



<b>KTM</b>										
<b>125 Duke</b> 11.3 kW	11-14-	54	slip on (muffler with connecting tube)		RSC	stainless steel	0544682 651514	<b>367,00</b>	<b>440,40</b>	
				(only incl. catalytic converter street-legal)		RSC	carbon	0544482 651514	<b>449,00</b>	<b>538,80</b>
				catalytic converter	EG/ABE/EEC			KAT014	<b>82,00</b>	<b>98,40</b>
<b>200 Duke</b> 19 kW	12-14-	54	<b>The exhaust system has an EEC approval, but is only authorised for road use in combination with the catalytic converter.</b>							
				mounting kit for RC - models				MZ651514	<b>55,00</b>	<b>66,00</b>
				stainless steel header only for KTM 125			stainless steel	0101 651211	<b>173,00</b>	<b>207,60</b>
<b>390 Duke</b> 390 RC	13-14-	54	slip on (muffler with front silencer)		RSC	stainless steel	4044682 652014	<b>455,00</b>	<b>546,00</b>	
				(only incl. catalytic converter street-legal)		RSC	carbon	4044482 652014	<b>537,00</b>	<b>644,40</b>
				catalytic converter	EG/ABE/EEC			KAT015	<b>85,00</b>	<b>102,00</b>
				<b>The exhaust system has an EEC approval, but is only authorised for road use in combination with the catalytic converter.</b>						
				slip on (muffler with connecting tube)	Race (no EG/ABE/EEC)	RSC	stainless steel	0344682 652014	<b>367,00</b>	<b>440,40</b>
					Race (no EG/ABE/EEC)	RSC	carbon	0344482 652014	<b>449,00</b>	<b>538,80</b>
<b>450 SXF</b>	11-	54	complete system full titanium (muffler left/right with titanium header)	Race (no EG/ABE/EEC)	ROXX	titanium	0199883 652511LRT	<b>1838,00</b>	<b>2205,60</b>	
<b>450 EXC</b>	10-12	54	complete system full titanium (titanium muffler with titanium header)	Race (no EG/ABE/EEC)	ROXX	titanium	0199883 652810T	<b>1064,00</b>	<b>1276,80</b>	

**SPORT = Silencer with homologation number (sound level is within the tolerated limit), but without catalytic converter, therefore no EEC!**  
 1) While stocks last! 2) EC-approval only for vehicles with a registration date before 1st July 2004. Specifications in the registration document have to match the actual conditions, i.e. the omission of the catalyser has to be reported to the licensing authority! A warranty of 24 months is given on all systems with EC-approval. No warranty on racing products. No warranty is given for small colour changes of the carbon!  
**Technical changes and errors excepted!**

updates: [www.remus.eu](http://www.remus.eu)



Model	Year	Ø mm	Description	Type	Muffler	Sleeve	Order no.	EUR excl. VAT	EUR incl. VAT
<b>KTM</b>									
450 SX-F	07-		complete system	Race (no EG/ABE/EEC)	FREERIDE	titanium	219803 652607	712,00	854,40
450 SMR	08-		incl. muffler with sound insert 94 or 100 db(A)						
			optional sound insert for 92 dB(A)	Race (no EG/ABE/EEC)			DBM068V	41,00	49,20
625 LC4	96-		slip on (muffler)	EG/ABE/EEC*	FREERIDE	aluminium	299102 655003	360,00	432,00
660 LC4 SMC Supermoto									
4T-SC									
LC4 620/625/640	96-								
LC4 640 Adventure									
LC4 625 SXC									
SMC 625 Supermoto									
4T-EGS									
690 SMC	08-	54	complete system incl. cat.	EG/ABE/EEC	HEXACONE	stainless steel	114682 655008	863,00	1035,60
690 Enduro	08-			EG/ABE/EEC	HEXACONE	titanium	114882 655008	927,00	1112,40
690 LC4, 46.3 kW			complete system no cat.	SPORT	HEXACONE	stainless steel	014682 655008	753,00	903,60
690 SMC R	12-			SPORT	HEXACONE	titanium	014882 655008	817,00	980,40
690 Enduro R	12-	54	slip on (muffler with connecting tube)	Race (no EG/ABE/EEC)	ROXX	stainless steel	0399683 655111L	499,00	598,80
690 LC4, 49 kW				Race (no EG/ABE/EEC)	ROXX	titanium	0399883 655111L	537,00	644,40
690 SMC R	14-								
690 Enduro R	14-								
690 LC4, 49 kW									
690 Duke 4	12-	54	slip on (muffler with connecting tube)	EG/ABE/EEC	BLACK HAWK	stainless steel black	0564782 655016	558,00	669,60
50 kW			pre muffler fits to REMUS or original muffler (only incl. catalytic converter street-legal)			stainless steel	0101 655312	317,00	380,40
690 Duke 4			catalytic converter	EG/ABE/EEC			KAT012	148,00	177,60
51.5 kW			<b>The exhaust system has an EEC approval, but is only authorised for road use in combination with the catalytic converter.</b>						
			complete system (header with muffler)	RACE (no EG/ABE/EEC)	HYPERCONE	stainless steel	016683 654512	597,00	716,40
				RACE (no EG/ABE/EEC)	HYPERCONE	stainless steel black	016783 654512	642,00	770,40
				RACE (no EG/ABE/EEC)	HYPERCONE	titanium	016883 654512	700,00	840,00

KTM 125 RC RSC



KTM 690 Enduro HexaCone



KTM 690 Duke 5 Black Hawk

**EURO 4**



KTM 690 Duke 5 Black Hawk - complete system



SPORT = Silencer with homologation number (sound level is within the tolerated limit), but without catalytic converter, therefore no EEC!

1) While stocks last! \*1) EC-approval only for vehicles with a registration date before 1st July 2004. Specifications in the registration document have to match the actual conditions, i.e. the omission of the catalyser has to be reported to the licensing authority! A warranty of 24 months is given on all systems with EC-approval. No warranty on racing products. No warranty is given for small colour changes of the carbon!

Technical changes and errors excepted!

updates: [www.remus.eu](http://www.remus.eu)



Model	Year	Ø mm	Description	Type	Muffler	Sleeve	Order no.	EUR excl. VAT	EUR incl. VAT
<b>KTM</b>									
690 Duke 5 (Euro 4) 54 kW	16-	54	slip on (muffler with connecting tube)	EG/ABE/EEC	BLACK HAWK	stainless steel black	0564782 655016	558,00	669,60
			pre muffler fits to REMUS or original muffler	RACE (no EG/ABE/EEC)		stainless steel	0101 655312	317,00	380,40
690 Duke 5R (Euro 4) 55 kW			catalytic converter				KAT012	148,00	177,60
			complete system (header with muffler)	RACE (no EG/ABE/EEC)	HYPERCONE	stainless steel	016683 654512	597,00	716,40
				RACE (no EG/ABE/EEC)	HYPERCONE	stainless steel black	016783 654512	642,00	770,40
				RACE (no EG/ABE/EEC)	HYPERCONE	titanium	016883 654512	700,00	840,00
950 Adventure	03-05		slip on (muffler with connecting tube)	Race (no EG/ABE/EEC)	ROXX	titanium	0399883 657011	543,00	651,60
990 Adventure	06-								
990 Adventure S LC8, 72 kW									
990 Adventure LC8, 78 kW	09-								
990 Adventure R LC8, 84.5 kW	09-								
1190 Adventure	13-		slip on (muffler) incl. Carbon heat protecting shield	EG/ABE/EEC	HEXACONE	stainless steel	094682 658013	728,00	873,60
1190 Adventure R	13-			EG/ABE/EEC	HEXACONE	Carbon	094482 658013	806,00	967,20
1050 Adventure	15-			EG/ABE/EEC	HEXACONE	titanium	094882 658013	790,00	948,00
1290 Super Adventure	15-			EG/ABE/EEC	BLACK HAWK	stainless steel black	0964782 658013	794,00	952,80
			stainless steel header (2 - 1) no cat. instead of original header *not mountable with KTM Powerparts motor protection	RACE			0101 658013	512,00	614,40
1290 Super Duke R	14-		slip on (muffler)	EG/ABE/EEC	HYPERCONE	stainless steel	096682 658014	407,00	488,40
				EG/ABE/EEC	HYPERCONE	stainless steel black	096782 658014	453,00	543,60
				EG/ABE/EEC	HYPERCONE	titanium	096882 658014	510,00	612,00
			Racing connecting tube instead of original front silencer	Race (no EG/ABE/EEC)			0103 658014	144,00	172,80
1290 Super Duke GT (Euro 4)	16-		slip on (muffler)	EG/ABE/EEC	HYPERCONE	stainless steel	096682 658014	407,00	488,40
				EG/ABE/EEC	HYPERCONE	stainless steel black	096782 658014	453,00	543,60
				EG/ABE/EEC	HYPERCONE	titanium	096882 658014	510,00	612,00
			Racing connecting tube instead of original front silencer	RACE (no EG/ABE/EEC)			0103 658016	144,00	172,80

KTM - 1190 Adventure R  
HexaCone



KTM - 1290 Super Duke R  
HyperCone



KTM - 1290 Super Duke GT  
HyperCone

**EURO 4**



KTM - 1290 Super Duke GT  
HyperCone

**EURO 4**



**SPORT = Silencer with homologation number (sound level is within the tolerated limit), but without catalytic converter, therefore no EEC!**

**1) While stocks last! 2) EC-approval only for vehicles with a registration date before 1st July 2004. Specifications in the registration document have to match the actual conditions, i.e. the omission of the catalyser has to be reported to the licensing authority! A warranty of 24 months is given on all systems with EC-approval. No warranty on racing products. No warranty is given for small colour changes of the carbon!**

**Technical changes and errors excepted!**

updates: [www.remus.eu](http://www.remus.eu)



Model	Year	Ø mm	Description	Type	Muffler	Sleeve	Order no.	EUR excl. VAT	EUR incl. VAT
<b>SUZUKI STREETBIKES</b>									
<b>DL 650 V-Strom</b> 50.5 kW	12-	54	slip on (muffler with connecting tube) incl. cat.	EG/ABE/EEC	OKAMI	stainless steel	1514682 854512	690,00	828,00
				EG/ABE/EEC	OKAMI	carbon	1514482 854512	777,00	932,40
				EG/ABE/EEC	OKAMI	titanium	1514882 854512	739,00	886,80
			slip on (muffler with connecting tube) no cat.	SPORT (no EG/ABE/EEC)	OKAMI	stainless steel	0514682 854512	618,00	741,60
				SPORT (no EG/ABE/EEC)	OKAMI	carbon	0514482 854512	705,00	846,00
				SPORT (no EG/ABE/EEC)	OKAMI	titanium	0514882 854512	667,00	800,40
<b>DL 1000 V-Strom</b>	14-	54	slip on (muffler with connecting tube)	EG/ABE/EEC	OKAMI	stainless steel	0514682 857014	392,00	470,40
				EG/ABE/EEC	OKAMI	carbon	0514482 857014	479,00	574,80
				EG/ABE/EEC	OKAMI	titanium	0514882 857014	441,00	529,20
<b>GSF 1200 Bandit</b> WVA9, 71 kW	04-05	54	slip on (muffler with connecting tube) no cat.	TG**/part EEC	REVOLUTION	carbon	058402 858001	567,00	680,40
<b>GSR 750</b> 78 kW	11-	54	slip on (muffler with connecting tube)	EG/ABE/EEC	OKAMI	stainless steel	0514682 855011	392,00	470,40
				EG/ABE/EEC	OKAMI	carbon	0514482 855011	479,00	574,80
				EG/ABE/EEC	OKAMI	titanium	0514882 855011	441,00	529,20
<b>GSX-R 600</b> WVCV, 92 kW	08-	54	slip on (muffler with connecting tube)	EG/ABE/EEC	OKAMI	stainless steel	0514682 854108	392,00	470,40
<b>GSX-R 750</b> WVCW, 110.3 kW	08-								
<b>Suzuki GSX-S 1000</b> <b>Suzuki GSX-S 1000F</b>	15-	54	slip on (muffler) incl. heat protecting shield	EG/ABE/EEC	HYPERCONE	stainless steel	096602 857015	455,00	546,00
			slip on (muffler) incl. heat protecting shield	EG/ABE/EEC	HYPERCONE	stainless steel black	096702 857015	502,00	602,40
			slip on (muffler) incl. heat protecting shield	EG/ABE/EEC	HYPERCONE	titanium	096802 857015	555,00	666,00
<b>SV 650</b> (Euro 4)	16-	54	slip on (muffler with connecting tube)	EG/ABE/EEC	OKAMI	stainless steel	0514682 854516	392,00	470,40
				EG/ABE/EEC	OKAMI	Carbon	0514482 854516	479,00	574,80
				EG/ABE/EEC	OKAMI	titanium	0514882 854516	441,00	529,20
				EG/ABE/EEC	OKAMI	stainless steel black	0514782 084516	423,00	507,60

Suzuki DL 1000 V-Strom  
Okami



Suzuki GSX-R 750  
Okami



Suzuki GSX-S 1000  
HyperCone



Suzuki SV 650  
Okami



**EURO 4**



slip on



screw on



Kompletanlage / complete system

SPORT = Silencer with homologation number (sound level is within the tolerated limit), but without catalytic converter, therefore no EEC!

1) While stocks last! 2) EC-approval only for vehicles with a registration date before 1st July 2004. Specifications in the registration document have to match the actual conditions, i.e. the omission of the catalyser has to be reported to the licensing authority! A warranty of 24 months is given on all systems with EC-approval. No warranty on racing products. No warranty is given for small colour changes of the carbon!

Technical changes and errors excepted!

updates: [www.remus.eu](http://www.remus.eu)



Model	Year	Ø mm	Description	Type	Muffler	Sleeve	Order no.	EUR excl. VAT	EUR incl. VAT
<b>TRIUMPH CRUISER</b>									
<b>America</b>	<b>07-</b>	<b>45</b>	slash-cut muffler left/right incl. cat.	EG/ABE/EEC	CUSTOM	chrome	007102 915508LR	<b>1114,00</b>	<b>1336,80</b>
986MK2, 45 kW				EG/ABE/EEC	CUSTOM	stainless steel black	007702 915508LR	<b>1114,00</b>	<b>1336,80</b>
<b>America LT</b>	<b>14-</b>								
986MK2, 45 kW									
<b>Speedmaster</b>	<b>07-</b>								
986ML2, 45 kW									
<b>Thunderbird</b>	<b>09-</b>		slash-cut muffler left/right	EG/ABE/EEC	CUSTOM	chrome	007102 919509LR	<b>786,00</b>	<b>943,20</b>
B16BA, 63.2 kW, 24.9 kW				EG/ABE/EEC	CUSTOM	stainless steel black	007702 919509LR	<b>786,00</b>	<b>943,20</b>
<b>Thunderbird Storm</b>	<b>10-</b>		Racing connecting tube instead of original front silencer	Race (no EG/ABE/EEC)			0103 919509	<b>223,00</b>	<b>267,60</b>
B17BA, 72.1 kW, 24.9 kW									
<b>Bonneville</b>	<b>07-08</b>		tapered muffler left/right incl. cat.	EG/ABE/EEC	CUSTOM	chrome	007102 915608LR	<b>928,00</b>	<b>1113,60</b>
<b>Bonneville T100</b>	<b>07-</b>			EG/ABE/EEC	CUSTOM	stainless steel black	007702 915608LR	<b>928,00</b>	<b>1113,60</b>
986MF, 48.6 kW, 24.3 kW									
<b>Bonneville</b>	<b>09-</b>		tapered muffler left/right incl. cat.	EG/ABE/EEC	CUSTOM	chrome	007102 916009LR	<b>928,00</b>	<b>1113,60</b>
<b>Bonneville SE</b>				EG/ABE/EEC	CUSTOM	stainless steel black	007702 916009LR	<b>928,00</b>	<b>1113,60</b>
986MF, 48.6 kW, 24.3 kW									
<b>Bonneville T120 (Euro 4)</b>	<b>16-</b>		Tapered muffler left/right Ø 84 mm	EG/ABE/EEC	CUSTOM	stainless steel chrome	007102 918016LR	<b>700,00</b>	<b>840,00</b>
<b>Bonneville T120 black (Euro 4)</b>				EG/ABE/EEC	CUSTOM	stainless steel black	007702 918016LR	<b>700,00</b>	<b>840,00</b>
<b>Thruxton</b>	<b>07-</b>		tapered muffler left/right incl. cat.	EG/ABE/EEC	CUSTOM	chrome	007102 915708LR	<b>928,00</b>	<b>1113,60</b>
986ME, 50.1 kW, 24.6 kW									
<b>Thruxton 1200</b>	<b>16-</b>		Tapered muffler left/right Ø 90 mm	EG/ABE/EEC	CUSTOM	stainless steel matt	007502 918516LR	<b>700,00</b>	<b>840,00</b>
<b>Thruxton 1200 R</b>				EG/ABE/EEC	CUSTOM	Stainless steel chrome	007102 918516LR	<b>700,00</b>	<b>840,00</b>
(Euro 4)				EG/ABE/EEC	CUSTOM	stainless steel black	007702 918516LR	<b>700,00</b>	<b>840,00</b>
<b>Rocket III Roadster</b>	<b>11-</b>		slip on left/right incl. cat. (muffler) with aluminium end cap	EG/ABE/EEC		stainless steel black	007752 919511LR	<b>1354,00</b>	<b>1624,80</b>
<b>Thunderbird LT</b>	<b>14-</b>		CUSTOM exhaust slash cut left/right Ø 102 mm (4")	EG/ABE/EEC	CUSTOM	stainless steel chrome	007102 919514LR	<b>1105,00</b>	<b>1326,00</b>
B17, 69 kW				EG/ABE/EEC	CUSTOM	stainless steel black	007702 919514LR	<b>1105,00</b>	<b>1326,00</b>
<b>Street Twin</b>	<b>16-</b>		tapered muffler left/right Ø 76 mm	EG/ABE/EEC	CUSTOM	stainless steel mat	007102 916016LR	<b>614,00</b>	<b>736,80</b>
40.5 kW (Euro 4)				EG/ABE/EEC	CUSTOM	stainless steel black	007702 916016LR	<b>678,00</b>	<b>813,60</b>

Triumph Thunderbird LT Custom



Triumph Bonneville SE Custom



Triumph Rocket III Roadster Custom



Triumph Street Twin Custom black



SPORT = Silencer with homologation number (sound level is within the tolerated limit), but without catalytic converter, therefore no EEC!

1) While stocks last! 2) EC-approval only for vehicles with a registration date before 1st July 2004. Specifications in the registration document have to match the actual conditions, i.e. the omission of the catalyser has to be reported to the licensing authority! A warranty of 24 months is given on all systems with EC-approval. No warranty on racing products. No warranty is given for small colour changes of the carbon!

Technical changes and errors excepted!

updates: [www.remus.eu](http://www.remus.eu)



# REMUS STREETBIKES

Model	Year	Ø mm	Description	Type	Muffler	Sleeve	Order no.	EUR excl. VAT	EUR incl. VAT
<b>TRIUMPH STREETBIKES</b>									
<b>Daytona 675/R</b> 94 kW	13-		slip on (muffler)	RACE (no EG/ABE/EEC)	HYPERCONE	stainless steel	096683 914613	455,00	546,00
				RACE (no EG/ABE/EEC)	HYPERCONE	stainless steel black	096783 914613	504,00	604,80
<b>Speed Triple 1050</b> 515NJ, 95.7 kW	05-06	54	slip on (muffler with connecting tube) no cat. <b>**WARNING: indicators must be re-positioned!</b>	Race (no EG/ABE/EEC)	POWERCONE	stainless steel black	055782 917505	529,00	634,80
<b>Speed Triple 1050</b> <b>Speed Triple 1050 S</b> (Euro 4)	10-		slip on (muffler)	EG/ABE/EEC	HYPERCONE	stainless steel	096682 917716	492,00	590,40
	16-			EG/ABE/EEC	HYPERCONE	stainless steel black	096782 917716	542,00	650,40
					EG/ABE/EEC	HYPERCONE	titanium	096882 917716	596,00
<b>Street Triple 675</b> <b>Street Triple 675 R</b> 78 kW	13-		slip on (muffler) right	EG/ABE/EEC	HYPERCONE	stainless steel	096682 914513	455,00	546,00
	13-			EG/ABE/EEC	HYPERCONE	stainless steel black	096782 914513	501,00	601,20
<b>Tiger 800</b> <b>Tiger 800 XC</b> <b>Tiger 800 XCx</b> <b>Tiger 800 XR</b> <b>Tiger 800 XRx</b>	11-	54	slip on (muffler with connecting tube)	EG/ABE/EEC	HEXACONE	stainless steel	054682 915311	522,00	626,40
	11-			EG/ABE/EEC	HEXACONE	carbon	054482 915311	600,00	720,00
	15-			EG/ABE/EEC	HEXACONE	titanium	054882 915311	585,00	702,00
	15-								
<b>Tiger 1050</b> 115NG, 84 kW	07-12	54	slip on (muffler with connecting tube)	EG/ABE/EEC	HEXACONE	stainless steel	054682 917007	522,00	626,40
				EG/ABE/EEC	HEXACONE	titanium	054882 917007	585,00	702,00
			complete system no cat.	Race (no EG/ABE/EEC)	HEXACONE	aluminium	014682 917007	1051,00	1261,20
				Race (no EG/ABE/EEC)	HEXACONE	titanium	014882 917007	1114,00	1336,80
			slip on (muffler with connecting tube) <b>not suitable with centre stand</b> complete system no cat.	Race (no EG/ABE/EEC)	POWERCONE	stainless steel black	055783 917007	497,00	596,40
				Race (no EG/ABE/EEC)	POWERCONE	stainless steel black	015783 917007	1026,00	1231,20
<b>Tiger 1050 Sport</b> 92 kW	13-		slip on (muffler with connecting tube)	EG/ABE/EEC	HEXACONE	stainless steel	054682 916013	522,00	626,40
				EG/ABE/EEC	HEXACONE	Carbon	054482 916013	600,00	720,00
				EG/ABE/EEC	HEXACONE	titanium	054882 916013	585,00	702,00
			slip on (muffler) not in combination with travel cases	EG/ABE/EEC	HYPERCONE	stainless steel	096682 916113	463,00	555,60
				EG/ABE/EEC	HYPERCONE	stainless steel black	096782 916113	513,00	615,60
<b>Tiger Explorer 1200</b> <b>Tiger Explorer XC</b> 101 kW	12-	54	slip on (muffler with connecting tube)	EG/ABE/EEC	HEXACONE	stainless steel	054682 918012	556,00	667,20
	13-			EG/ABE/EEC	HEXACONE	carbon	054482 918012	634,00	760,80
					EG/ABE/EEC	HEXACONE	titanium	054882 918012	619,00
<b>Tiger Explorer XCA</b> (Euro 4) <b>Tiger Explorer XCX</b> (Euro 4) <b>Tiger Explorer XRX</b> (Euro 4) <b>Tiger Explorer XRT</b> (Euro 4)	16-	54	slip on (muffler with connecting tube)	EG/ABE/EEC	HEXACONE	stainless steel	054682 918016	556,00	667,20
	16-			EG/ABE/EEC	HEXACONE	carbon	054482 918016	634,00	760,80
	16-			EG/ABE/EEC	HEXACONE	titanium	054882 918016	619,00	742,80
	16-			EG/ABE/EEC	BLACK HAWK	stainless steel black	0564782 918016	576,00	691,20

Triumph Street Twin  
Custom black

Triumph Thruxton 1200 R  
Stainless steel mat

Triumph Street Triple 675  
HyperCone

**EURO 4**

**EURO 4**



slip on



screw on



Kompletanlage / complete system

**SPORT = Silencer with homologation number (sound level is within the tolerated limit), but without catalytic converter, therefore no EEC!**

**1)** While stocks last! **\*)** EC-approval only for vehicles with a registration date before 1st July 2004. Specifications in the registration document have to match the actual conditions, i.e. the omission of the catalyser has to be reported to the licensing authority! A warranty of 24 months is given on all systems with EC-approval. No warranty on racing products. No warranty is given for small colour changes of the carbon!

**Technical changes and errors excepted!**

updates: [www.remus.eu](http://www.remus.eu)



Model	Year	Ø mm	Description	Type	Muffler	Sleeve	Order no.	EUR excl. VAT	EUR incl. VAT
<b>TRIUMPH STREETBIKES</b>									
<b>Trophy SE</b> 99 kW	12-	54	slip on (muffler with connecting tube)	EG/ABE/EEC	HEXACONE	stainless steel	054682 918112	558,00	669,60
				EG/ABE/EEC	HEXACONE	carbon	054482 918112	636,00	763,20
				EG/ABE/EEC	HEXACONE	titanium	054882 918112	621,00	745,20
<b>Sprint GT 1050</b> 95.6 kW	10-		slip on (muffler with connecting tube) side case version	EG/ABE/EEC	HEXACONE	stainless steel	054682 918010	522,00	626,40
				EG/ABE/EEC	HEXACONE	carbon	054482 918010	600,00	720,00
				EG/ABE/EEC	HEXACONE	titanium	054882 918010	585,00	702,00

Triumph Speed Triple 1050S  
HyperCone

**EURO 4**



Triumph Tiger 800 XCx  
HexaCone



<b>YAMAHA ENDURO</b>									
<b>XT 1200 Z Super Ténéré</b> DP01, 80.9 kW	10-	54	slip on (muffler with connecting tube)	EG/ABE/EEC	HEXACONE	stainless steel	054682 998110	522,00	626,40
				EG/ABE/EEC	HEXACONE	titanium	054882 998110	585,00	702,00
<b>YAMAHA STREETBIKES</b>									
<b>FZ8</b> RN25, 78.1 kW	10-	54	slip on (muffler with connecting tube)	EG/ABE/EEC	OKAMI	stainless steel	0514682 995210	392,00	470,40
				EG/ABE/EEC	OKAMI	carbon	0514482 995210	479,00	574,80
				EG/ABE/EEC	OKAMI	titanium	0514882 995210	441,00	529,20
<b>YZF-R125</b> RE06, 11 kW	08-	45	complete system no cat.	Race (no EG/ABE/EEC)	POWERCONE	stainless steel	015682 991208	487,00	584,40
<b>YZF-R6</b> RJ11, 93.4 kW	06-07	45	<b>high performance complete system</b> stainless steel header (4-2-1) with conical tubes & full Titanium Race muffler (107dB) *Only for FIM Supersport Reglement-107dB	Race (no EG/ABE/EEC)	GRAND PRIX	titanium	013903 994008	1201,00	1441,20
<b>YZF-R6</b> RJ15, 94.9 kW	08-	45	<b>high performance complete system</b> stainless steel header (4-2-1) with conical shaped tubes & full Titanium Race muffler  <b>high performance complete system</b> stainless steel header (4-2-1) with conical tubes & full Titanium Race muffler (107dB) *Only for FIM Supersport Reglement-107dB	Race (no EG/ABE/EEC)	HEXACONE	titanium	014883 994008	1217,00	1460,40
				Race (no EG/ABE/EEC)	GRAND PRIX	titanium	013903 994008	1201,00	1441,20

Yamaha - XT 1200 Z Super Ténéré  
HexaCone



Yamaha - YZF-R125  
PowerCone



**SPORT** = Silencer with homologation number (sound level is within the tolerated limit), but without catalytic converter, therefore no EEC!  
 1) While stocks last! 2) EC-approval only for vehicles with a registration date before 1st July 2004. Specifications in the registration document have to match the actual conditions, i.e. the omission of the catalyser has to be reported to the licensing authority! A warranty of 24 months is given on all systems with EC-approval. No warranty on racing products. No warranty is given for small colour changes of the carbon!  
**Technical changes and errors excepted!**

updates: [www.remus.eu](http://www.remus.eu)



Kompletanlage / complete system



screw on



slip on

Model	Year	Ø mm	Description	Type	Muffler	Sleeve	Order no.	EUR excl. VAT	EUR incl. VAT
<b>YAMAHA STREETBIKES</b>									
<b>YZF-R1</b> RN22, 133.9 kW	09-		slip on (muffler) left/right	EG/ABE/EEC	HEXACONE	stainless steel	094682 997009LR	<b>1036,00</b>	<b>1243,20</b>
			race connecting tube (replaces serial catalytic converter)	Race (no EG/ABE/EEC)	VBR / Conn.	stainless steel	0103 997009	<b>277,00</b>	<b>332,40</b>
<b>Yamaha YZF-R1M</b> <b>Yamaha YZF-R1</b> <b>Yamaha YZF-R1</b>	15-	60	<b>high performance complete system</b> - stainless steel stainless steel header (4-2-1) & full titanium race muffler incl. sound insert	Race (no EG/ABE/EEC)	HEXACONE	stainless steel	014883 997015	<b>1547,00</b>	<b>1856,40</b>
<b>XJR 1200</b> 4PU, 4RB, 61 kW	95-	54	complete system (4-2-1) no cat., fits not on travelcase version	Race (no EG/ABE/EEC)	GRAND PRIX	aluminium	513103 997501	<b>772,00</b>	<b>926,40</b>
<b>XJR 1300</b> RP021, 78.1 kW	99-	54	complete system (4-2-1) no cat., fits not on travelcase version	Race (no EG/ABE/EEC)	GRAND PRIX	aluminium	513103 997501	<b>772,00</b>	<b>926,40</b>
<b>XJ 1300</b> 72 kW									
<b>XJR 1300</b> RP061, 72 kW	02-03								
<b>XJR 1300</b> RP10, 78.1 kW	04-	54	slip on (muffler with connecting tube) left/right	EG/ABE/EEC	REVOLUTION GP	aluminium	053182 998504LR	<b>872,00</b>	<b>1046,40</b>
<b>Yamaha MT-07</b> <b>Yamaha MT-07 Moto Cage</b>	14- 15-	65	complete system (header, front muffler and rear muffler) (only incl. catalytic converter street-legal)		HYPERCONE	stainless steel	406682 994515	<b>826,00</b>	<b>991,20</b>
			catalytic converter	EG/ABE/EEC			KAT016	<b>148,00</b>	<b>177,60</b>
<b>The exhaust system has an EEC approval, but is only authorised for road use in combination with the catalytic converter.</b>									
			complete system (header, racing connecting tube and rear muffler)	Race (no EG/ABE/EEC)	HYPERCONE	stainless steel	036682 994515	<b>737,00</b>	<b>884,40</b>
				Race (no EG/ABE/EEC)	HYPERCONE	stainless steel black	036782 994515	<b>782,00</b>	<b>938,40</b>
				Race (no EG/ABE/EEC)	HYPERCONE	titanium	036882 994515	<b>840,00</b>	<b>1008,00</b>
<b>XSR 700</b>	16-		complete system (header, racing connecting tube and rear muffler)	Race (no EG/ABE/EEC)	HYPERCONE	stainless steel	036682 994515	<b>737,00</b>	<b>884,40</b>
				Race (no EG/ABE/EEC)	HYPERCONE	stainless steel black	036782 994515	<b>782,00</b>	<b>938,40</b>
				Race (no EG/ABE/EEC)	HYPERCONE	titanium	036882 994515	<b>840,00</b>	<b>1008,00</b>

Yamaha YZF-R6  
Kompletanlage / Complete system



Yamaha YZF-R1M  
High Performance Racing System



**SPORT = Silencer with homologation number (sound level is within the tolerated limit), but without catalytic converter, therefore no EEC!**

**1)** While stocks last! **\*)** EC-approval only for vehicles with a registration date before 1st July 2004. Specifications in the registration document have to match the actual conditions, i.e. the omission of the catalyser has to be reported to the licensing authority! A warranty of 24 months is given on all systems with EC-approval. No warranty on racing products. No warranty is given for small colour changes of the carbon!

**Technical changes and errors excepted!**

updates: [www.remus.eu](http://www.remus.eu)



Model	Year	Ø mm	Description	Type	Muffler	Sleeve	Order no.	EUR excl. VAT	EUR incl. VAT
<b>YAMAHA STREETBIKES</b>									
Yamaha MT-09	14-	65	complete system (header, front muffler and rear muffler)		HYPERCONE	stainless steel	406682 995515	914,00	1096,80
Yamaha MT-09 Street Rally	14-		(only incl. catalytic converter street-legal)		HYPERCONE	stainless steel black	406782 995515	959,00	1150,80
Yamaha MT-09 Sport Tracker	14-		*not suitable for models with centre stand		HYPERCONE	titanium	406882 995515	1017,00	1220,40
			catalytic converter	EG/ABE/EEC			KAT016	148,00	177,60
<b>The exhaust system has an EEC approval, but is only authorised for road use in combination with the catalytic converter.</b>									
			complete system (header, racing connecting tube and rear muffler)	Race (no EG/ABE/EEC)	HYPERCONE	stainless steel	036682 995515	825,00	990,00
			*not suitable for models with centre stand	Race (no EG/ABE/EEC)	HYPERCONE	stainless steel black	036782 995515	870,00	1044,00
				Race (no EG/ABE/EEC)	HYPERCONE	titanium	036882 995515	928,00	1113,60
			complete system (header, racing connecting tube and rear muffler)	Race (no EG/ABE/EEC)	HYPERCONE	stainless steel	036682 995515	825,00	990,00
			suitable for models with centre stand	Race (no EG/ABE/EEC)	HYPERCONE	stainless steel black	036782 995515	870,00	1044,00
				Race (no EG/ABE/EEC)	HYPERCONE	titanium	036882 995515	928,00	1113,60
Yamaha MT-09 Tracer	15-	65	complete system (header, racing connecting tube and rear muffler)	Race (no EG/ABE/EEC)	HYPERCONE	stainless steel	036682 995515	825,00	990,00
				Race (no EG/ABE/EEC)	HYPERCONE	stainless steel black	036782 995515	870,00	1044,00
				Race (no EG/ABE/EEC)	HYPERCONE	titanium	036882 995515	928,00	1113,60
MT-10 (Euro 4)	16-	65	slip on (muffler) incl. heat shield	EG/ABE/EEC	HYPERCONE	stainless steel	096682 997016	455,00	546,00
				EG/ABE/EEC	HYPERCONE	stainless steel black	096782 997016	502,00	602,40
			Racing connecting tube instead of original front silencer	RACE (no EG/ABE/EEC)			0103 997016	207,00	248,40
<b>YAMAHA CRUISER</b>									
XV 950	14-	55	slip on (muffler with connecting tube)		RETRO	stainless steel black	057702 996514	535,00	642,00
XV 950 R			catalytic converter	EG/ABE/EEC			KAT011	85,00	102,00
<b>The exhaust system has an EEC approval, but is only authorised for road use in combination with the catalytic converter.</b>									

Yamaha MT-10  
HyperCone Full System



Yamaha XSR 700  
HyperCone Full System



Yamaha MT-10  
HyperCone

**EURO 4**



Yamaha XV 950  
RETRO



**SPORT = Silencer with homologation number (sound level is within the tolerated limit), but without catalytic converter, therefore no EEC!**

**1) While stocks last! \*1) EC-approval only for vehicles with a registration date before 1st July 2004. Specifications in the registration document have to match the actual conditions, i.e. the omission of the catalyser has to be reported to the licensing authority! A warranty of 24 months is given on all systems with EC-approval. No warranty on racing products. No warranty is given for small colour changes of the carbon!**

**Technical changes and errors excepted!**

updates: [www.remus.eu](http://www.remus.eu)



# REMUS RACING TECHNOLOGY

## Von der Rennstrecke auf die Straße / from the racetrack to the street

REMUS Rennsporttechnologie findet man auf nahezu allen Rennstrecken dieser Welt. Die dabei gewonnenen Erfahrungen fließen direkt in die Produktentwicklung und Serienfertigung der REMUS Sportauspuffanlagen ein und garantieren stetige Produktinnovation und höchste Qualität.

Zahlreiche Superbike- und Supersportteams vertrauen seit Jahren auf das Know-how von REMUS. Siege in den unterschiedlichsten nationalen und internationalen Rennsportklassen unterstreichen eindrucksvoll die Leistungsfähigkeit der REMUS High Performance Abgasanlagen.

REMUS Racing Technology can be found on nearly every race track around the world. The technical expertise of racing is transferred straight to our street legal sport exhaust systems. Extensive racing usage provides the necessary feedback for the REMUS technicians to develop and produce REMUS sport exhaust systems and guarantee ongoing product innovation and highest quality.

Since many years numerous Superbike and Supersport teams trust in the know-how of REMUS. Wins in different national and international racing series proved the performance of REMUS sport exhaust systems in an impressive manner.



## REMUS RACING SYSTEMS

**BMW S 1000 R / BMW S 1000 RR**

siehe Seite / visit page 35

**HONDA CBR 1000 RR**

siehe Seite / visit page 39

**SUZUKI GSX-R 600 / 750 / 1000**

in Vorbereitung / in preparation

**YAMAHA YZF-R6**

siehe Seite / visit page 47

**YAMAHA YZF-R1M / Yamaha YZF-R1**

siehe Seite / visit page 43





Jochen Rotter - Austrian Supersport Championship



Yamaha YZF-R1M  
High Performance Racing System



Honda - CBR 1000 RR  
High Performance Racing System



[www.youtube.com/user/RemusInnovation](http://www.youtube.com/user/RemusInnovation)



[www.facebook.com/RemusSportexhaust](http://www.facebook.com/RemusSportexhaust)

**HOCOPARTS**  
PREMIUM MOTORCYCLE PRODUCTS

Hoco Parts B.V.  
Harselaarseweg 104  
3771 MB Barneveld  
The Netherlands  
T: +31 (0)342 – 412290  
[remus@hocoparts.com](mailto:remus@hocoparts.com)  
[www.hocoparts.com](http://www.hocoparts.com)

Fotos / Pictures:  
© REMUS Innovation GmbH

Irrtümer und Änderungen vorbehalten! / Errors and omissions excepted!  
24 Monate Garantie auf alle Anlagen mit EG-Genehmigung! Keine Garantie auf  
Racinganlagen! / 24 months warranty is given on all systems with EC-approval!  
No warranty on Racing products!

[012017 - 0030E-17EUR]



**REMUS**  
SPORTEXHAUST

**REMUS Innovation GmbH**

Dr.-Niederdorfer-Straße 25, A-8572 Bärnbach  
Tel.: 0043 (0)3142 / 69 00-0, Fax: 0043 (0)3142 / 69 00-291  
[office@remus.at](mailto:office@remus.at), [www.remus.eu](http://www.remus.eu), [www.remususa.com](http://www.remususa.com), [www.remus.cn](http://www.remus.cn)

